

# Lenovo Hybrid Classroom

## WITH MICROSOFT TEAMS ROOMS

Lenovo Hybrid Classroom with Microsoft Teams Rooms brings smarter collaboration technology into the classroom to create an immersive, flexible learning environment for classes of all sizes.

One option Lenovo offers for building a hybrid classroom starts with ThinkSmart Hub, an all-in-one Microsoft Teams Rooms system that helps students and teachers in the classroom connect, share, and collaborate seamlessly and securely with students joining from home. In addition to one-touch meeting start and other user-friendly features, ThinkSmart Hub includes remote manageability capabilities through Lenovo's custom-built ThinkSmart Manager software.\*

Combine ThinkSmart Hub with the new ThinkSmart Cam—the first AI smart camera from Lenovo—for a complete hybrid classroom solution that helps facilitate teaching and learning no matter where students are located.

\*ThinkSmart Manager comes pre-loaded on all new ThinkSmart Hub 500 and Hub devices. ThinkSmart Manager Basic is included with your hardware purchase, while a Premium level of capabilities are available at an additional cost.

Smarter  
technology  
for all

Lenovo



 Certified for  
Microsoft Teams

## ThinkSmart Hub



### EASY TO USE

With its 10.1-inch touchscreen and familiar Microsoft Teams Rooms interface, ThinkSmart Hub is intuitive technology that helps teachers and students collaborate from the classroom with those joining from home. One-touch meeting start lets teachers quickly initiate video calls and share content.



### EASY TO HEAR

With four built-in full duplex speakers and four dual array mics, ThinkSmart Hub creates immersive 360-degree sound. Plus, it's ultra-low noise certified for even better acoustic design.



### EASY TO MANAGE

IT teams can monitor, manage, and troubleshoot ThinkSmart Hub devices from one location using pre-loaded ThinkSmart Manager software.<sup>1</sup> Lenovo's optional Smart Collaboration Professional Services are available to provide more personalized support.



### EASY TO TRUST

Built-in security solutions from Lenovo ThinkShield and Microsoft combine to offer powerful, proven protection for devices and users.



### CAPTURES REALITY

ThinkSmart Cam gives everyone the feeling of being in the classroom together thanks to its wide field of view coupled with high resolution and frame rates that eliminate distracting lag and distortion. It also delivers higher contrast, vivid colors, and brighter images in low-light environments.



### EAGER TO LEARN

ThinkSmart Cam follows the conversation and facilitates interactivity for more engaging lessons thanks to AI features<sup>2</sup> like active speaker tracking and whiteboard awareness.



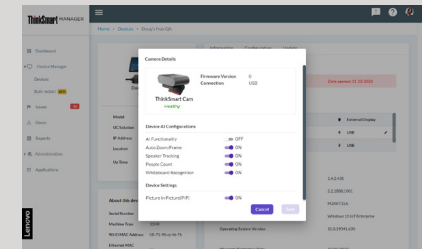
### FITS RIGHT IN

From its compact, lightweight design to its certified compatibility with Microsoft Teams Rooms, ThinkSmart Cam fits seamlessly into any hybrid classroom environment. It can easily be set up as a standalone device or mounted to a wall.



### EASY TO MANAGE

When integrated with ThinkSmart Manager<sup>2</sup>, ThinkSmart Cam can be centrally managed and customized to meet the needs of the users or classroom.



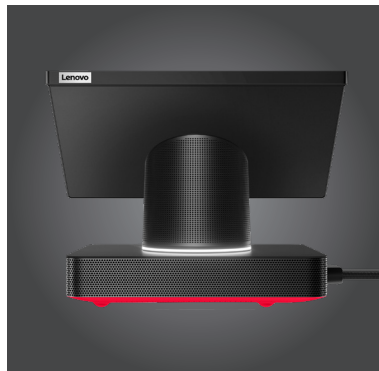
## ThinkSmart Manager

This custom-built manageability console gives your IT team the power to deploy, monitor, and troubleshoot your entire fleet of Lenovo ThinkSmart devices all from one place.

- Leverage a single console to remotely deploy, manage, configure, update, and resolve issues
- See real-time status by device and receive live-at-a-glance issues lists
- Streamline actions across multiple devices with "apply all" option
- Generate reports to keep tabs on device issues and trends
- Take advantage of elevated security options

<sup>1</sup>ThinkSmart Manager comes pre-loaded on all new ThinkSmart Hub 500 and Hub devices. ThinkSmart Manager Basic is included with your hardware purchase, while a Premium level of capabilities are available at an additional cost.

<sup>2</sup>AI features are controlled via ThinkSmart Manager, which is available with the purchase of a ThinkSmart compute, such as ThinkSmart Hub or ThinkSmart Edition Tiny. When used as a standalone device, a configuration app is available via download in ThinkSmart Manager. A ThinkSmart compute is not required to set up a ThinkSmart Manager account. Whiteboard awareness will be available at ship support. People counting will be available in Spring 2021 (v2.0) with ThinkSmart Manager.



Lenovo has many options to support your hybrid classroom needs. Here are two easy ways to package the solution.



#### THINKSMART HUB + THINKSMART CAM

- ThinkSmart Hub
- ThinkSmart Cam
- ThinkSmart Manager
- Microsoft Teams Rooms
- Optional Smart Collaboration Professional Services

#### THINKSMART + LOGITECH TAP

- ThinkSmart Tiny
- ThinkSmart Cam
- ThinkSmart Bar
- Logitech Tap
- ThinkSmart Manager
- Microsoft Teams Rooms
- Optional Smart Collaboration Professional Services



## OPTIONAL SMART COLLABORATION PROFESSIONAL SERVICES

Lenovo's Smart Collaboration Professional Services offer personalized, end-to-end support to help your school make the most of your ThinkSmart technology investment.

#### ASSESS

Lenovo is here to help identify any issues that could sidetrack your deployment by providing a detailed assessment of potential red flags and a follow-up report.

#### DESIGN

Lenovo evaluates and categorizes your hybrid classroom spaces by infrastructure and experience needs to design a "room standard" that includes hardware, software, and service recommendations.

#### DEPLOY

From virtual deployment installation to integration assistance, Lenovo ensures your ThinkSmart devices function optimally in your hybrid classroom environment.

#### MAINTAIN

Our easy-to-follow do's and don't's, remote check-ins, and assistance with ongoing security patches and updates take the stress out of updates and device changes.

#### TRAIN

Lenovo helps instruct all your audiences—IT and AV support teams, teachers, and administrators—on how to fully take advantage of your new technology.

#### ONSITE

Lenovo provides white glove treatment through a dedicated, on-site specialist who can complete physical set up, installation, configuration, and device troubleshooting.

©2021 Lenovo. All rights reserved. These products are available while supplies last. Prices shown are subject to change without notice. For any questions concerning price, please contact your Lenovo Account Executive. Lenovo is not responsible for photographic or typographic errors. Warranty: For a copy of applicable warranties, write to: Warranty Information, 500 Park Offices Drive, RTP, NC 27709, Attn: Dept. ZPYA/B600. Lenovo makes no representation or warranty regarding third-party products or services. Trademarks: Lenovo, the Lenovo logo, Rescue and Recovery, ThinkPad, ThinkCentre, ThinkSmart, ThinkStation, ThinkVantage, and ThinkVision are trademarks or registered trademarks of Lenovo. Microsoft, Windows, and Vista are registered trademarks of Microsoft Corporation. Other company, product and service names may be trademarks or service marks of others.

Start building your hybrid classroom at [Lenovo.com/education](https://lenovo.com/education)

