

Smarter  
technology  
for all

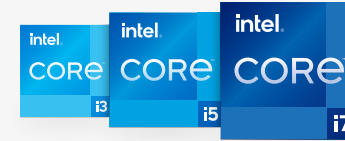
Lenovo

Powered by 11th Gen  
Intel® Core™ processor

# Positively accelerating evolution

Take on today's  
management challenges  
with confidence

[www.lenovo.com](http://www.lenovo.com)



Powered by 11th Gen  
Intel® Core™ processor

Smarter  
technology  
for all

Lenovo



85% of organizations experienced one or more  
endpoint attacks that compromised data  
or infrastructure in the past year.<sup>1</sup>





BUILT FOR BUSINESS

Intel vPro® Platform

Smarter  
technology  
for all

Lenovo

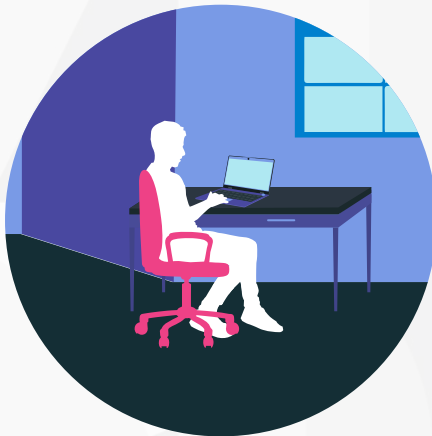
# Risk Mitigation

## Tech solutions for SMBs to tackle risk

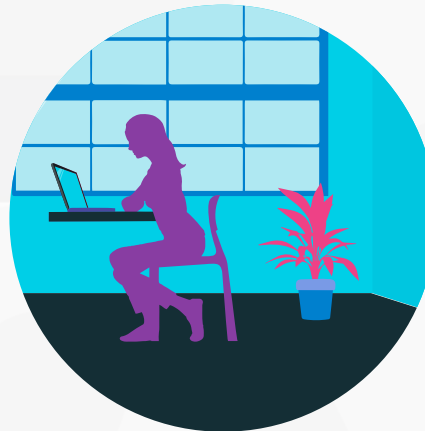
The office as we know is a thing of the past.

It's a new era, and for IT decision makers (ITDMs), that means new challenges. Whether your employees work remotely, at the office, or in a hybrid model that blends the two, the focus for ITDMs is shifting to finding security options that minimize risks without burdening finance and time. The good news is that more than half of all companies have upped their data security budgets, which gives ITDMs more flexibility to tackle the key risks.

That's why Lenovo has an end-to-end approach to safety. From device to solution to service, our holistic safety mindset ensures your people are protected at every touchpoint.



**Need a business  
continuity plan**



**SMBs with a  
growing workforce**



**Reinvent your  
business model**

# Need a business continuity plan

If the pandemic has taught us anything it's that now more than ever having a plan is paramount. That's why 80% of businesses have built strategies for continuity to keep things running no matter what<sup>1</sup>. With the constant evolution of technology, a new emerging workforce and a hybrid business model that supports flexible working patterns, our newly expanded user landscape has heightened the risks for SMBs. For SMBs in need of a business continuity plan or an immediate pivot consider these solutions.

<sup>1</sup>: Lenovo, The Future of Work and Digital Transformation Report 2021.

**Devices are your first line of defence as you build your digital business. Opt for modern Lenovo Think devices that are powered by the built for business Intel vPro® platform for an unrivaled PC solution and Windows 10 Pro; the combination of software and hardware helps defend against modern cyberthreats. Look out for smart features like;**

- ThinkBook PCs have built in identity security like Smart Power On, it integrates the Touch Fingerprint Reader (FPR) on the power button that allows you to switch on and log in securely with a single touch.
- Hardware level features like dTPM and Integrated IR camera on Think devices, an enterprise-grade face authentication that utilizes a camera specially configured for near infrared (IR) imaging to authenticate and unlock device, offering better security than a normal camera.
- Our ThinkBook devices are designed for a secure remote workforce, they all come with ThinkShutter — our world-first camera shutter physically shuts the camera so that no prying eyes can get through, so your camera is functional only when the user needs it to be.

**After putting modern PCs into the hands of your workers protect your data with Windows BitLocker. Microsoft's easy-to-use, proprietary encryption program for Windows that can encrypt your entire drive as well as help protect against unauthorized changes to your system such as firmware-level malware it offers;**

- BitLocker Recovery Password Viewer – Locate and view BitLocker Drive Encryption recovery passwords that have been backed up and recover data that is stored on a drive encrypted with BitLocker.
- BitLocker Drive Encryption Tools – Make the most of command-line tools, manage-bde and repair-bde, and the BitLocker cmdlets for Windows PowerShell.



**Smarter  
technology  
for all**

**Lenovo**

## Consider these Lenovo solutions:



# SMBs with a growing workforce

A hybrid work model that supports a remote working force is here to stay. 83% of IT decision makers around the world know employees will choose to work remotely<sup>2</sup>. IT departments have been put on enormous strain to accommodate the demand for remote working and the need for collaboration solutions. Technology that was important before has now become business critical. As your workforce grows, you need advanced remote working security, secure cloud solutions and advanced SaaS solutions.



BUILT FOR BUSINESS

Intel vPro® Platform

Smarter  
technology  
for all

Lenovo

## Invest in cloud optimized PCs that will protect your data with provisions for multiple locations.

- ThinkCentre desktops locks out data transfer capabilities from all USB ports.
- Use Intel Remote Secure Erase on Lenovo ThinkPad devices, regardless of the device's location. This solution is powered by built for business **Intel vPro® platform**, allowing IT admins to remotely wipe an Intel SSD Pro drive on an AMT-enabled and provisioned device.

## Our ThinkBook Gen 2 series gives you access to software that will give you greater protection for your business no matter where your employees work.

- Get Two Factor (2FA) Authentication with Windows Hello for Business that replaces the need for complex passwords or risk of breaches from phishing attacks with a new type of user authentication that is tied to a device and uses biometrics for added identity protection.
- Enhance your WiFi protection further with Lenovo Vantage, this solution prevents endpoints from joining rogue WiFi networks, analyze threats in real time and distinguish between legitimate and risky, possibly malicious, networks.
- Fast IDentity Online (FIDO) – Allows secure, password-less login to websites through fingerprint reader\*.

## With a larger endpoint security network, SMBs will need to ensure protection from advanced cyber threats such as ransomware, zero-days and phishing emails.

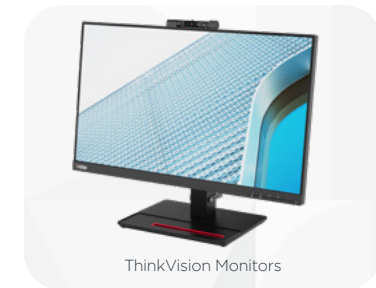
- Effectively enable employees to work from anywhere with cybersecurity solutions like BUFFERZONE, which not only detects malicious networks but also creates an isolation container for untrusted data sources—preventing malware from escaping and infecting the endpoint or the network.
- Lenovo Think devices are Protected by SentinelOne. AI-powered prevention of attacks across all major vectors, including ransomware and sophisticated fileless attacks with automated, response capabilities. It's an all-in-one platform to prevent, detect, respond, and hunt in the context of all enterprise assets.

\* available on selected ThinkPad and ThinkBook devices

## Consider these Lenovo solutions:



ThinkCentre Tiny



ThinkVision Monitors



2-in-1 ThinkBook 14s Yoga i



# Reinvent your business model

In the last year, between 89 – 94% of SMBs added online operations or went completely online. Many three-year digital transformation strategies were rolled out in less than three months – with no additional investment or additional resources<sup>3</sup>. Embracing this digital transformation is no mean feat. IT departments need to find the best solution to mitigate risk for the organization to meet compliance while enabling the flexible workforce to work securely. Lenovo has an end-to-end approach to safety from device to solution to service.



**Protect your capital investments and ensure productivity. Mitigate risk for your business by investing innovative, durable and reliable machines that will give you the performance power your need.**

- Lenovo Devices tested to the extreme with Mil-SPEC. Mil-SPEC is a set of standards designed to measure durability, ruggedness and reliability. It's how Lenovo ensures every product strikes a perfect balance of value and longevity right out of the box.
- Our Lenovo Think Devices are powered by the **built for business Intel vPro® platform and provides built-in enhanced security features**, that will ensure your devices are secure in every employee's hands.
- Work smarter with universal one-cable connectivity and remote device management features designed especially for IT departments. Our Azure Sphere enabled smart docks connect securely to the cloud so your IT team can remotely manage, diagnose, update, and reboot them to keep workers productive no matter where they sit.
- Lenovo ThinkSmart Hub will deliver enhanced security, it's enabled with Lenovo's industry-leading suite of security solutions, it protects your privacy and your data. Plus, its preloaded Windows 10 IoT Enterprise software providing intelligent enterprise-grade protection. Additionally, cable management door locks with that to secure physical ports and prevent cables from being accidentally disconnected.

**Software-as-a-service (SaaS), is one of the most critical investment decisions an SMB can make. Lenovo Think devices and solutions have a cloud first design that seamlessly integrates with Microsoft 365, Microsoft teams and OneDrive that will take the pressure off your IT teams when dealing with enterprise level threats.**

- Protect your data no matter where it lives with Carbonite Safe™. Protect files on servers, external storage devices, and up to 25 computers. Advanced encryption keeps your data secure in transit and in storage, so it never exists in an unprotected state. Meet data retention requirements with secure, accessible cloud data protection with automatic back up features.
- Invest in a mobile device management solution like Absolute® on Lenovo's Think Devices. Maintain visibility of your devices whether on or off the network, all from one place. Use this single destination to easily pinpoint device geolocation, monitor usage and software, maximize device utilization and continually assess your device security posture. Take full control of your endpoints and defend against cyber threats with a powerful lifeline to protect at-risk devices and data. Use Absolute Control to define geofences and detect unauthorized device movement, before taking action to make the device useless or remotely delete critical data.
- Establish resilient security management by ensuring your critical apps always remain healthy with self-healing critical endpoint controls. Remotely identify sensitive data, gain precise insights and act on endpoint vulnerabilities.



BUILT FOR BUSINESS

Intel vPro® Platform

Smarter  
technology  
for all

Lenovo

Consider these Lenovo solutions:



ThinkSmart Hub



ThinkCentre Tiny



ThinkCentre Small Form Factor (SFF)



ThinkVision Monitors



ThinkPad L/T/E series



Lenovo V Series



Smart Docks



Smarter  
technology  
for all

Lenovo

# Maximize flexibility. Minimize risk.

Give your people the freedom to work securely

Contact Us on TechToday

