

Lenovo + Microsoft Windows 11

Healthcare Upgrade Reference Guide

With modern Lenovo devices running Microsoft Windows 11, IT leaders harness device management in an evolving healthcare landscape and equip their teams to provide the best care from anywhere.



Lenovo recommends
Windows 11 Pro for Business.

Smarter
technology
for all

Lenovo



Timeline to accelerate a modern clinical environment

Healthcare organizations need to be on a secure and fully supported operating system to maintain regulatory requirements and patient care. Transition time is limited, so you should migrate to Windows 11 as quickly as possible.



Save the date

Windows 10 remains supported through **October 14, 2025**. Upgrading to Windows 11 now ensures you'll have continuous OS support and the security and financial protections critical to your healthcare organization.



Get ahead of the rush

As we move closer to the Windows 10 end-of-support date, demand for new Windows 11 devices is likely to significantly increase. Upgrade now to avoid inventory constraints.

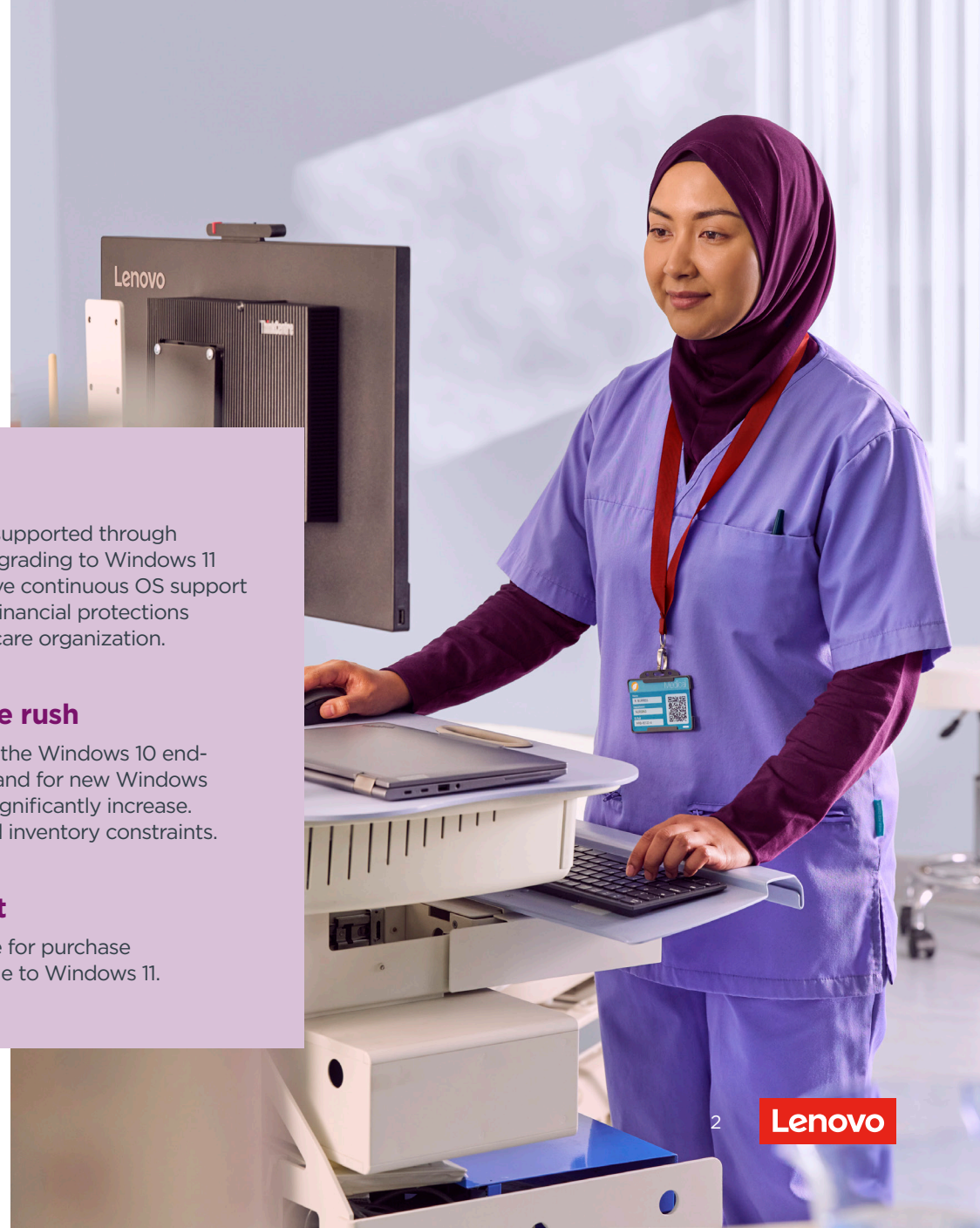


The time is right

Most devices available for purchase now will be upgradable to Windows 11.



Lenovo recommends
Windows 11 Pro for Business.





Lenovo recommends
Windows 11 Pro for Business.

In this guide

Why Lenovo Health and Windows 11?	4
Lenovo's Windows 11 overview for IT pros	5
Partner with Lenovo	9
Steps to migration	10
Frequently asked questions	11
Additional resources	13

Why upgrade to Windows 11 with Lenovo?

Where and how providers deliver patient care has changed dramatically — and so has IT management. For today's IT teams to work confidently across clinical environments, they need to deploy, secure, and manage devices remotely.

As healthcare evolves, Lenovo helps IT pros meet the future of care delivery and medical innovation. With our vision, global network, leading supply chain, and layered security, we work closely with you to take the next step in your digital transformation.

That's why we're excited about the Windows 11 operating system upgrade and want to help your teams feel just as confident.

Windows 11 is the most secure version of Windows yet.

Purposeful new features and functionality enhance portability and reliability, and a deeper integration with Microsoft Teams and other collaboration and communication apps streamlines the UX.

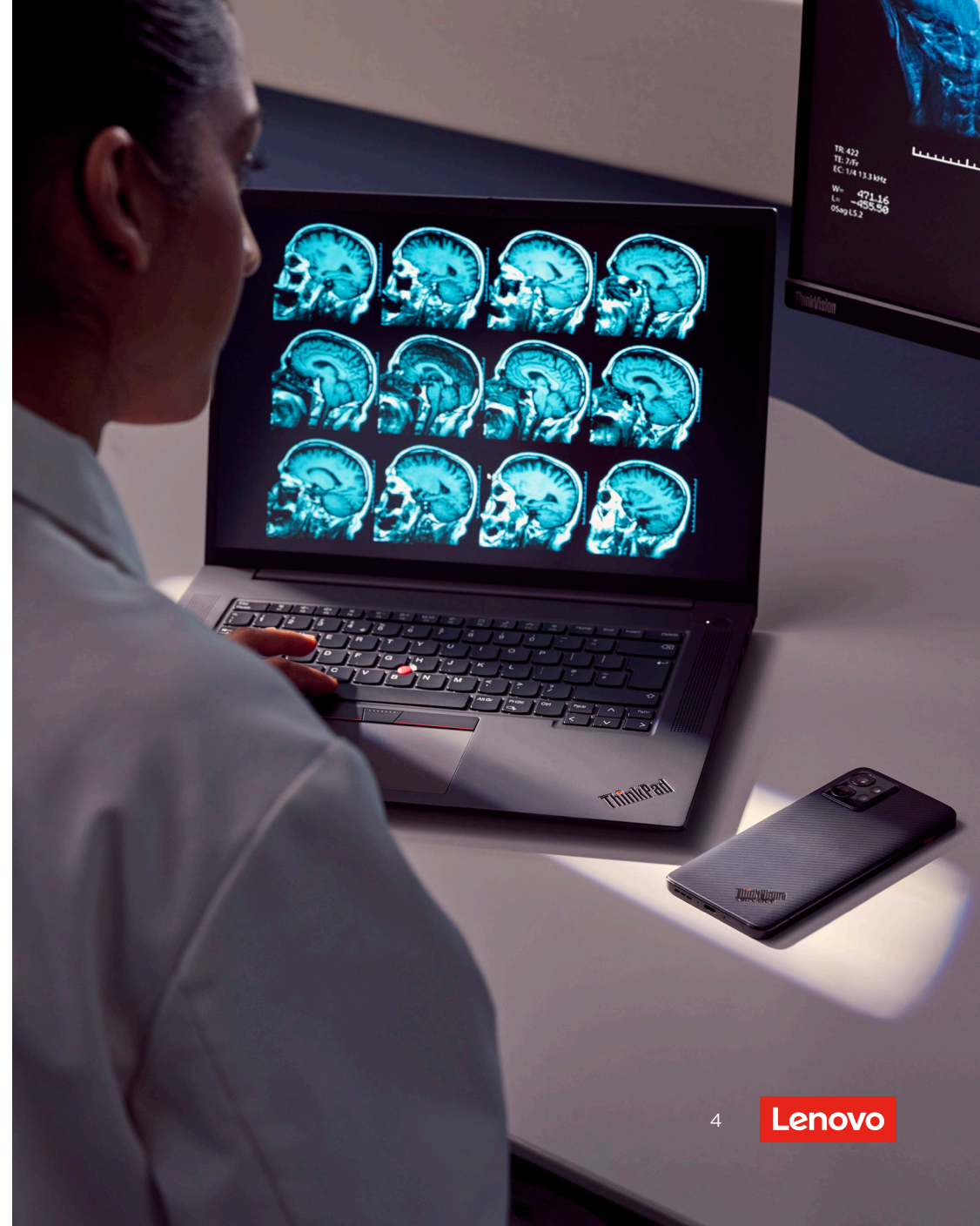
Users can create multiple custom desktops on one PC, instantly share or directly mute and unmute from the taskbar, simplify routine tasks like data entry and scheduling, and get things done with fewer clicks and more intuitive navigation.

A streamlined user interface is just the start.

Windows 11 also focuses on today's most pressing IT concerns — security, manageability, and employee productivity. The benefits of Windows 11 are amplified on Lenovo devices designed specifically for the needs of the healthcare industry.



Lenovo recommends
Windows 11 Pro for Business.



Lenovo's Windows 11 overview for IT pros

Moving to Windows 11 will feel more like an update than a major upgrade and will deliver new user experience and feature benefits designed to give clinical staff, administrative teams, and research groups a more productive and secure hybrid work experience.

All the new Microsoft OS benefits are amplified by the quality, design, and innovation of modern Lenovo devices. Here's what you need to know.



Lenovo recommends
Windows 11 Pro for Business.

Windows 11 in brief

Windows 11 provides a familiar but modern and refreshed interface that helps increase productivity and enhances the collaboration experience for end users while maintaining consistent management for IT-managed devices — right from the start.

- **Powerful for providers and staff.** Offers new productivity features and functionality designed to meet the challenges of hybrid and on-the-go care, with a completely refreshed look and feel. AI-powered multitasking and videoconferencing help users get more done with less stress. In fact, organizations using Windows 11 saw a 15% increase in end-user productivity.¹
- **Consistent for IT.** Fits right into existing processes. Windows 11 is based on the same foundation as Windows 10, so it's consistent for IT and will support the same IT management tools you use today.
- **Secure for all.** Powerful built-in security including hardware-based isolation, encryption, and malware protection. Cloud configuration simply secures a Windows 11 device for curated apps and access. App compatibility and cloud management make adoption easy.

High value

Benefits of Windows 11 devices revealed by a Forrester economic impact study¹ included:

- **250% ROI** in three years and payback in less than six months
- **20% reduced risk** of successful security attack
- **20% increased productivity** for security and IT teams
- **80% reduced** number of help desk tickets
- **25% decreased** time for device deployment

Improve focus for providers and staff

- A centered Start button, clean layout, and easy navigation
- Smart noise canceling and blur
- The most inclusively designed Windows ever — using voice, digital pen, and touch

Noteworthy feature benefits

- **Zero Trust-ready OS** to protect data and access anywhere
- **Simple, powerful UX** to improve clinical and administrative productivity
- **Customizable desktop, workflow automation, and snap layout** for a personalized workflow that supports better clinical experiences
- **Smarter care team and patient collaboration** with Microsoft Teams

Simplify information management

- Create desktops for separate workstreams and use the taskbar to efficiently switch between them
- Organize desktops with snap layouts and jump back in quickly with snap groups
- Keep important documents at hand with customizable widgets integrated in the desktop and taskbar

Lenovo's powerful security + Windows 11's pre-enabled protection: Ready for new hybrid healthcare models

Protecting patient privacy, clinical data, medical research, and assets has never been more essential. But it's challenging to protect distributed teams and help them connect safely and efficiently from anywhere. The powerful built-in security of Lenovo ThinkShield and Windows 11 fortifies both in-person and virtual care, mitigates risk with a layered approach to security, and delivers the best protection possible.

Built-in security ensures protections are ready without having to configure devices. Microsoft has increased the security baseline by requiring a security chip (TPM 2) and ensuring protections are built in and turned on by default to protect from malware and sophisticated attacks.

Pre-enabled virtualization-based security (VBS) and hypervisor-enforced code integrity (HVCI) safeguard the operating system and information stored in memory. Secured-core PCs built on this foundation are twice as resilient against malware.²

Defending your hospital from tomorrow's threats requires innovative security solutions like those on Lenovo Health devices running Windows 11. Secure the future of work with Zero Trust-ready OS and AI endpoint protection by SentinelOne, hardware isolation, encryption, malware protection, and integrated hardware and OS safeguards. Simplified steps to deploy Windows Hello for Business (requires TPM 2 or greater) make password-less protection easier as well.



Lenovo recommends
Windows 11 Pro for Business.

Lenovo Health ThinkPad® T14 security innovations fortify a fleet running Windows 11

Optional RFID reader

Compatible with all major SSO providers, including Imprivata.® Supports RFID and NFC technologies to align computer access with facility access, enabling secure network authentication with the tap of a badge.

Facial recognition technology

Optional HD IR hybrid camera enables sign-on with Windows Hello.™

Built-in protection

ThinkShield security

Optional e-privacy screen

Optional 500 cd/m² FHD IPS PrivacyGuard with PrivacyAlert On-Cell touch display prevents breaches of confidential information and visual hacking. Gaze detection automatically blurs the screen when the user looks away.

Lenovo Quick Clean software

Allows devices to be sanitized without shutting down — promoting productivity and safety.



Gain more control over security

- Deploy, secure, and manage devices remotely from the cloud
- Simplify patient device delivery and save time and money with zero-touch deployment, including hospital security policies*
- Apply the same security policies to all devices with expanded support for group policy administrative templates in MDM solutions like Microsoft Endpoint Manager*

Lenovo's smarter IT + Windows 11's seamless setup: Productivity from the get-go

With Windows 11 remote deployment and compliance, you can deploy remote PCs through the cloud in compliance with hospital policies. Expanded support for group policy administrative templates in mobile device management solutions like Microsoft Endpoint Manager enables you to easily apply the same security policies to on-premises and remote devices. Cloud-managed security updates offer additional control. Approve, schedule, and monitor any Windows Update content, including security updates, drivers, and firmware, through the cloud.

Windows 11 allows for better performance consistency — critical for IT — across device configurations with new minimum system requirements. And migration is easy: Windows 11 is built on the same core as Windows 10, supporting the same IT management tools you use today. Most software and accessories that worked with Windows 10 are expected to work with Windows 11.

Lenovo devices running Windows 11 give your remote providers, staff, and patients the advanced security protections they would get on your medical campuses.

Use Windows Autopilot to provision Windows 11 devices with greater peace of mind. Users can simply unbox their devices and start working.



Lenovo recommends
Windows 11 Pro for Business.

Lenovo devices designed for clinical environments complement an OS designed for hybrid work.

ThinkPad® T14

The perfect healthcare-ready laptop for busy clinicians, whether at the bedside, in the office, or collaborating on a Teams call.

ThinkPad® X1 2-in-1

Combine the flexibility of a laptop, tablet, keyboard and touchscreen with this 2-in-1 that meets clinicians' need for on-the-go adaptability.

ThinkPad® T16

With its 86 Wh battery, this versatile laptop enables long-lasting mobility for care and collaboration on the go.

ThinkCentre® Tiny and Tiny-in-One

This small-footprint desktop or all-in-one is exactly right for shared use on carts and throughout the clinical workspace.



ThinkPad® T14

Lenovo's best-in-class durability + Windows 11's streamlined UX: Collaborative value-based healthcare

The latest evolution of Windows offers a smarter way to collaborate with Microsoft Teams, making it easier to meet and share content. Windows 11 introduces improved multi-finger touch for a more fluid tablet experience, personalized widgets, voice typing, intelligent noise canceling and blur, and Snap Groups that allow a user to "snap" together apps or create a grouping for a particular project.

Lenovo smart battery management uses recent charging history to make small changes that improve long-term battery lifespan and extend the value of your IT investment. Lenovo continues to push the limits of innovation through technology to help care teams and support staff meet the challenges of everyday patient care with MIL-SPEC tested devices ready to meet the environmental and handling demands of clinical settings.



Lenovo recommends
Windows 11 Pro for Business.

Lenovo performance innovations elevate Windows 11 user-focused features



Optimized audio

Lenovo supports Dolby Voice for clearer sound in noisy environments and delivers input and output features that enhance usability and heighten the collaboration experience on platforms like Microsoft Teams.



Enhanced viewing

Select models of the ThinkPad® T14 include an optional stunning OLED display and Intel® Iris® Xe graphics for enhanced viewing of diagnostic imaging.



Wi-Fi 6E antenna designs**

Newly engineered to provide epic connectivity.



Intelligent cooling

Includes an auto mode setting.

Streamline administrative duties

- Pin virtual apps to the taskbar and run them as if on the hard drive with Azure Virtual Desktop***
- Automate tasks across applications with a low code-guided process and pre-built connectors
- Search apps, websites, Windows settings, research, databases, patient files, or personnel from one place with Microsoft Search****

Partner with Lenovo for a smart Windows 11 deployment strategy

Plan, manage, and secure your clinical environments with confidence. Lenovo's dedicated healthcare experts help assess your needs and deliver a range of services to get you up and running quickly and smoothly. Choose the level of assistance that matches your needs — from do-it-yourself with the Lenovo Migration Assistant, to completely hands off with Lenovo TruScale Device as a Service, and everything in between.

Let Lenovo do it for you as a service

Lenovo TruScale Device as a Service (TruScale DaaS) gives you worry-free, end-to-end lifecycle device management with predictable, flexible payments and one point of contact and accountability.

Lenovo TruScale benefits include keeping care teams and medical research staff equipped with the most up-to-date hardware and software, configured specifically for your healthcare organization's environment — eliminating the need to manage future upgrades and migrations.

Get your files and settings from here to there

If you prefer the hands-on approach, Lenovo Migration Assistant is your DIY guide. Select a PC equipped with the assistant or [download it](#) for free.

The Assistant lets you:

- Use your Wi-Fi connection instead of external drives to move the files and settings you want to keep
- Get simple instructions to duplicate your favorite settings on the new PC
- Make safe transfers with the fastest file migration software available



Lenovo recommends
Windows 11 Pro for Business.



Steps to Windows 11 migration

Lenovo and Windows 11 are a dynamic duo for clinical and administrative applications. Planning your hospital's upgrade today is a smart IT strategy.



Lenovo recommends
Windows 11 Pro for Business.

1

Enlist an expert

OS transitions can be daunting. As a trusted Microsoft partner with certified global expertise and specialized healthcare experience, Lenovo helps you deploy, configure, and support the latest solutions that can unlock all the benefits of Windows 11 for healthcare. Trust Lenovo as your health IT partner and the first step in migration.

2

Learn the system requirements

Review the [basic and features-specific requirements](#) for installing Windows 11 on a PC.

3

Inventory your fleet's compatibility

Determine which devices in your network meet the minimum system requirements. Healthcare organizations will be able to move eligible PCs directly to Windows 11 using Windows Update for Business.

4

Confirm with partners and check accessories

Most software (including third-party ISV security solutions) and accessories that work with Windows 10 are expected to work with Windows 11. Check with your software publisher or accessory manufacturer for specific details on your products.

5

Validate business-critical applications

App compatibility is a core design tenet of Windows 11. For peace of mind, use [Test Base for Microsoft 365](#) to test your applications in preview. If any compatibility issues arise, Microsoft App Assure will remediate them.

6

Develop a rollout schedule

Keep the Windows 10 support deadline top of mind so you don't risk running an unsupported OS. Start getting ready for Windows 11 as soon as you can and plan to complete your migration well before October 14, 2025.

Frequently asked questions

Are the Lenovo devices in my current fleet upgradable?

If your existing Lenovo PC is running the current version of Windows 10 and meets the minimum hardware specifications to run Windows 11, it will be able to upgrade. Specific timing will vary by device. Windows will send a notification once an eligible PC has been tested and validated for the free upgrade.

Which Lenovo devices that I buy now will be upgradable to Windows 11?

We offer a wide selection with Windows 11 pre-loaded or upgradable. Your Lenovo representative can help you confirm a particular device. Or refer to our [complete list](#) of compatible devices.

What is an update versus an upgrade?

An update is a change within a version of a Windows product — for example, moving from Windows 10, version 2004 (the Windows 10 May 2020 update) to Windows 10, version 20H2 (the Windows 10 October 2020 update). An upgrade is when you change OS versions — for example, moving from Windows 10 to Windows 11, or when you upgrade to a higher edition within the same OS version (e.g., Windows 10 Home to Windows 10 Pro).

What are the basics of the free upgrade offer for Windows 11?

The upgrade to Windows 11 is available for devices running Windows 10, version 20H1 or newer, on eligible hardware. Please refer to the [full minimum hardware requirements and specs](#).



Lenovo recommends
Windows 11 Pro for Business.



Retiring older equipment as you transition to Windows 11

With support for Windows 10 ending by October 2025, now is the perfect time to get market value out of old assets.

Lenovo Asset Recovery Services (ARS) is an alternative that lets you capture the remaining value of older devices — a single-source solution to responsibly dispose of them and get fair market value. Lenovo also offers a trade-in program to help with fleet refresh.

Healthcare IT team frequently asked questions (continued)

Will my current Windows 10 applications, devices, and accessories work with Windows 11?

Most applications, devices, and accessories that worked with Windows 10 will be compatible with Windows 11. In fact, Windows 11 has a 99.7% app compatibility.³ Check with your software, device, or accessory manufacturer to confirm your applications are compatible.

Will all my third-party Windows 11 security solutions continue to work across Windows 10 and Windows 11?

Check with your software publisher or accessory manufacturer to make sure you are on the current version that supports Windows 11.

What edition of Windows 11 will I get when I upgrade?

This will depend on your Microsoft enterprise agreement. Consult your Microsoft representative to confirm the edition to expect.

What is the upgrade path from Windows 10 to Windows 11? My healthcare organization still has some Windows 7 devices. If they meet the hardware floor, can these be upgraded directly to Windows 11?

Most devices available for purchase now will be upgradable to Windows 11. You will have the option to upgrade, clean install, or reimage Windows 10 devices to move to Windows 11. For Windows 7 devices that meet hardware requirements, you will need to clean install or reimage to go directly to Windows 11. Please view the [full minimum hardware requirements and specs](#).

What is the activation and provisioning process for my remote users? Is it the same as Windows 10?

Windows 11 has been built on the same core as Windows 10, so you'll continue with the same experience you're accustomed to.

I use Windows Autopilot to provision devices for end users. Will that be available for Windows 11?

Yes, you will be able to use Windows Autopilot for Windows 11 devices.

As an IT pro, can I manage or remove certain new features in Windows 11 that I may not want in my install base or to expose to my users?

Similar to previous versions of Windows, IT will have control over certain policies that will effectively manage or remove certain features. Windows 11 has been built on the same core as Windows 10, so you will continue with the same experience you're accustomed to.

How does Windows 11 impact my current deployment of Windows 10?

Windows 11 and Windows 10 can be deployed, managed, and serviced in the same way, as both versions of Windows use the same deployment, management, and servicing tools. In terms of deployment, you can consider Windows 11 and Windows 10 as two different releases of the same OS.

Can I run both Windows 11 and Windows 10 in parallel? If so, do I use the same process and tools to manage both?

Yes, Windows 11 is based on the same foundation as Windows 10, so they can coexist, and the same processes and tools are used to manage them.

Who do I contact if I have issues in upgrading to Windows 11 or general support questions?

Visit [Microsoft Support](#) and contact your Lenovo sales representative.



Lenovo recommends
Windows 11 Pro for Business.



Additional resources

Microsoft support

- [Hardware requirements and specs](#)
- [Windows 11 Pro information](#)
- [Windows 11 Enterprise information](#)
- [General upgrade support](#)
- [Windows 11 learning modules \(forthcoming\)](#)
- [PC Health Check app for compatibility](#)

Lenovo services and solutions

- [Lenovo Health Solutions](#)
- [Lenovo Managed Services](#)
- [Lenovo DaaS](#)
- [Lenovo Premier Support](#)

Get ready for Windows 11 with Lenovo

Keep your providers and patients connected regardless of where care happens. Lenovo has the devices and solutions to reduce risk and downtime dramatically, and our experts make device deployments and updates secure and simple.

We can free up your IT team and deliver a smooth transition to Windows 11. **Speak with your Lenovo representative today.**

SOURCES

- 1 Commissioned study delivered by Forrester Consulting, "The Total Economic Impact™ of Windows 11 Pro Devices," December 2022
- 2 Windows 11 customer presentation, 2021
- 3 App Assure program data

* Active Directory and internet connection required.

** Wi-Fi 7 coming soon.

*** Azure Virtual Desktop license required.

**** Microsoft 365 required.

© Lenovo 2023. All rights reserved. v1.00 December 2023.



Lenovo recommends
Windows 11 Pro for Business.

Smarter
technology
for all

Lenovo