

Lenovo 13w Yoga

Built on the new Windows 11 platform and packed with next-generation AMD Ryzen™ processors, Lenovo 13w Yoga supports instructors and administrators across every classroom, campus, and learning environment. Upgradable memory and storage options easily adapt to increased workloads, while an array of ports and connectivity options, including Wi-Fi 6 and optional LTE CAT16, offer faster connectivity while uploading lessons or connecting virtually with students and peers.

This versatile, portable device is built for the way modern educators create, share, and grade content with features that include an FHD IPS Touch display with 16:10 aspect ratio, user-facing Dolby® Audio speakers, an optional 5MP world-facing camera, and an optional AES garaged pen. A 360-degree hinge enables Lenovo 13w Yoga to transform to the task at hand, yet its ruggedized design withstands everyday bumps, drops, and spills to ensure that learning never stops.

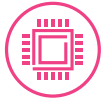


 Windows 11

Smarter
technology
for all

Lenovo

Lenovo 13w Yoga



IMPRESSIVE PERFORMANCE

Versatile and powerful, Lenovo 13w Yoga makes easy work of daily tasks with up to AMD Radeon™ R7 Series processors. Users can expand both memory and storage as future workloads demand.



INTERACTIVE DESIGN

The FHD IPS Touch display with optional integrated AES pen makes the Lenovo 13w Yoga ideal for grading, sketching, and annotating lectures. For even greater precision, try the optional integrated AES pen. With its 16:10 aspect ratio, this 13.3-inch device delivers even greater vertical height than a traditional 14-inch device, allowing users to remain more productive in almost any application.



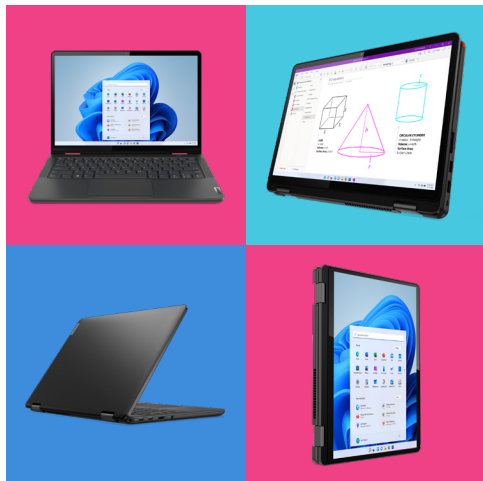
PORTABLE AND PORT-RICH

Weighing just over three pounds, Lenovo 13w Yoga is a lightweight companion whether trekking across campus or moving between faculty and staff meetings. It features a full array of ports that make it easy to connect to all kinds of devices, including dual external monitors, at home, the office, the classroom, or lecture hall.



TOUGH TECHNOLOGY

Designed to MIL-SPEC-810H and Lenovo EDU Spec standards, Lenovo 13w Yoga withstands almost anything from the classroom and lecture hall to the coffee shop or kitchen table with its drop-resistant design, spill-resistant keyboard, and reinforced ports and hinges.



sustainability

By 2025, Lenovo aims to use 100% post-consumer recycled materials in the manufacturing of its PC products and 90% recycled materials in its PC product packaging.

productivity

With up to 10 hours¹ of battery life, the Lenovo 13w Yoga easily keeps up with a full day of teaching and grading, with energy to spare.

connectivity

Wi-Fi 6 and optional 4G/LTE CAT16 offer lightning-fast connectivity, while optional Band 48 keeps users connected to district-owned networks.

durability

Lenovo 13w Yoga features reinforced ports and hinges, drop resistance up to 75 cm, a spill resistant (up to 360 ml) keyboard, and scratch resistant CORNING® GORILLA® GLASS.

¹Based on testing with MobileMark 2018. Battery life varies significantly with settings, usage, and other factors.

Lenovo 13w Yoga

Services

Lenovo offers a comprehensive portfolio of end-to-end services to support and protect your investment—so you can focus on the job at hand, not IT.



MICROSOFT FOR EDUCATION

Microsoft Learning Tools apply proven techniques to improve reading and writing skills for students of all ages and abilities. Personalized learning tools, Teams integration, and Flipgrid video sharing allow teachers to educate students whenever—and wherever.



PREMIER SUPPORT

Provides direct access to skilled and experienced Lenovo technicians offering comprehensive hardware and software support. Gives you a consistent point of contact within Lenovo to ensure that your case resolution is professionally managed from start to finish.



ACCIDENTAL DAMAGE PROTECTION (ADP)

Prevents the hassles of unexpected repair costs. Provides coverage for non-warranted damage incurred under normal operating conditions, such as minor spills, drops, or damage to the integrated screen.



DaaS FOR EDUCATION

Device as a Service (DaaS) for Education manages the lifecycle of devices so educators and ITDMs can ensure better learning outcomes. Includes affordable monthly payments, education-specific software and solutions, flexible service support, and DaaS for Esports.



GREEN DELIVERY

Improve sustainability for a smaller environmental impact. Green Delivery Service delivers devices in bulk packaging to reduce per-unit waste, improve operational efficiency with consolidated shipments, and allow for environmentally friendly packaging disposal.

Accessories

Lenovo Go USB-C Wireless Mouse

With blue optical sensor that works on most surfaces, USB-C connectivity, programmable utility button, and ultra-long battery life, this mouse delivers superior portability and performance.



PN: GY51C21210V

Lenovo 100 Stereo USB Headset

This lightweight stereo headset features a rotatable boom mic and passive noise cancellation for clear audio on VoIP calls. Earcups are made from leather and memory-foam.



PN: 4XD0X88524

Lenovo 13w Yoga



performance

PROCESSOR

Up to AMD Radeon™ R7 Series processor

OPERATING SYSTEM

Up to Windows 11 Pro

GRAPHICS

Integrated AMD Radeon™ graphics

CAMERA

FHD (1080p) front camera with webcam privacy shutter
5MP world-facing camera¹

MEMORY

Up to 16GB DDR4 (3200MHz)
Soldered + SODIMM

STORAGE

Up to 512GB SSD

BATTERY

Up to 10 hours², 51Whr

AC ADAPTER

Type-C 65W Rapid Charge (0-80% in 60 minutes)

AUDIO

Dolby® Audio

security

Fingerprint Reader on power button¹
Webcam privacy shutter
Kensington™ lock slot



connectivity

INPUT/OUTPUT PORTS

2x USB-A 3.2 Gen 1
2x USB-C 3.2 Gen 1
1x Full SD card reader
1x HDMI 2.0
1x Audio (Headphone and Microphone Combo Jack)

WIRELESS

Wi-Fi 6 802.11ax
4G/LTE CAT16

design

DISPLAY

13.3" FHD IPS Touch with 16:10 aspect ratio
(300nits, 83% STBR) and CORNING® GORILLA® GLASS

DIMENSIONS (W X D X H)

305 x 216.8 x 17.6 mm
12.01 x 8.53 x 0.69 inches

WEIGHT

1.45 kg/3.19 lbs

MIL-STD 810H

Yes

KEYBOARD

Non-backlit and backlit keyboard options
Graphite gray color
Spill resistant up to 360 ml

PEN

Optional integrated AES pen

COLOR

Thunder Black (top cover, Aluminum)

¹Optional

²Based on testing with MobileMark 2018. Battery life varies significantly with settings, usage, and other factors.