



BUILT FOR BUSINESS

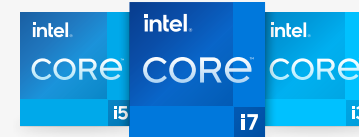
Intel vPro® Platform

Smarter  
technology  
for all

Lenovo

**Get your team  
back on their  
feet in no time  
after disruptions**

[www.lenovo.com](http://www.lenovo.com)



Powered by 11th Gen  
Intel® Core™ processor

Smarter  
technology  
for all

Lenovo

43% of cyber-attacks target  
small to medium businesses  
(SMBs), and nearly...



60% of small businesses  
that are breached,  
go out of business.<sup>1</sup>



# Accelerate Resumption from Anywhere

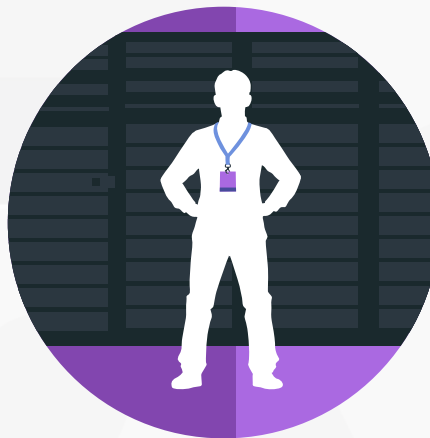
## Build your resumption plan with Lenovo's solutions

The future of work is beautifully complex and full of opportunities, but it brings plenty of new challenges too. The key to keeping pace is to have solutions that help SMBs recover when downtime occurs. It's about finding the tools to reconnect, refocus and reset.

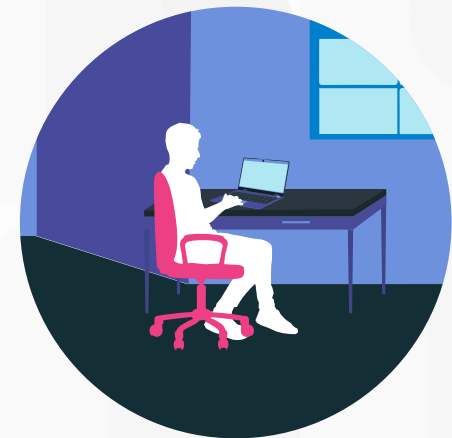
With Lenovo on your side, you can get your employees back on their feet and help your teams hit the ground running — empowered and inspired. We believe it comes down to having a proactive approach to security, data protection and recovery.



**Resumption planning for  
small business owners**



**IT manager  
planning resumption**



**Business leaders  
managing resumption**

# Resumption Planning for Small Business Owners

Even the smallest businesses heavily rely on robust hardware and cloud connectivity to keep running, no matter the circumstances. However, when downtime does happen, it can be costly. According to Gartner, the average cost of IT downtime for a small business is \$5,600 per minute, those minutes can balloon, so having a technology resumption plan is imperative<sup>2</sup>. That's why today's small businesses are up taking new hardware and software solutions to make sure they've got the first line of defence.



Smarter  
technology  
for all

Lenovo

**Protect your company against the loss of valuable business data, particularly when 50% of critical corporate data resides on desktops and laptops<sup>3</sup>. When the resources for disaster recovery are on speed-dial, SMBs can recover quickly and effectively with Lenovo Think devices that are powered by the built for business Intel vPro® platform for an unrivaled business PC solution and Windows 10 Pro. This combination of software and hardware will help you resume business immediately.**

- Offer a more secure way for your staff to get instant access to their devices and business critical software like the Microsoft 365 platform. Lenovo ThinkBook Gen 2 devices powered by **11th Gen Intel® Core™ processors** combine powerful, built-in security with Windows 10 Pro.
- Start with Smart Power On, it integrates the Touch Fingerprint Reader (FPR) on the power button that allows you to switch on and log in securely with a single touch.
- Get Two Factor (2FA) Authentication with Windows Hello for Business that replaces the need for complex passwords or risk of breaches from phishing attacks with a new type of user authentication that is tied to a device and uses biometrics for added identity protection.
- Remote workers can easily access files in the cloud securely from anywhere using SaaS apps like Microsoft OneDrive for Business.

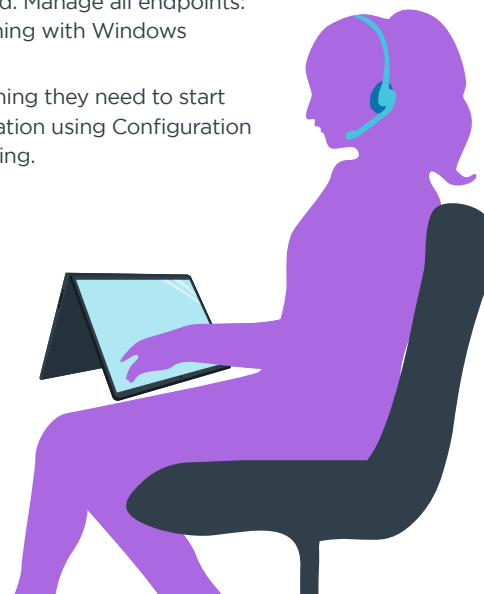
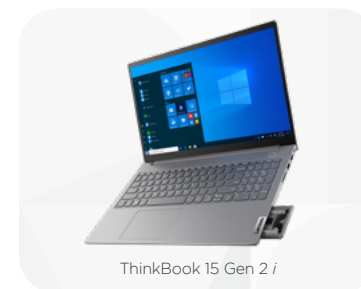
**Get endpoint security, device management, and intelligent cloud actions in a unified management platform with Microsoft Endpoint Manager.**

- Support a diverse bring-your-own-devices (BYOD) ecosystem and quickly resume business irrespective of where your workers are. Provision, reset, and repurpose laptops and mobile devices with minimal infrastructure and process overhead. Manage all endpoints: on-premises and remote, corporate-owned and personal, desktop and mobile. Support zero-touch provisioning with Windows Autopilot, and Android Enrollment.
- Get a highly scalable, globally distributed modern management service, so your employees will have everything they need to start working again. Keep well-established processes for deploying, managing, and updating PCs in your organization using Configuration Manager and take advantage of the powerful Microsoft cloud with Intune for security and modern provisioning.

**36% of SMBs have PCs that are more than four years old<sup>4</sup>. Most out-of-the-box warranties last one or two years. Lenovo gives you a warranty upgrade so you can avoid productivity disruptions, that include:**

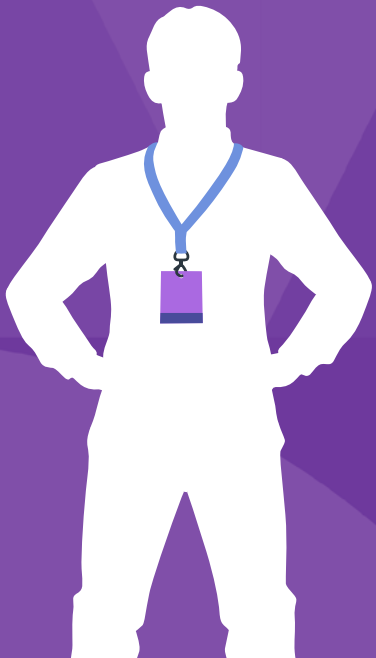
- Choose from customized warranty options that meet your budget, tech replacement, and upgrade needs.
- Add upgrades or extensions to existing devices to start saving on repair costs and reducing PC downtime.
- By extending or upgrading your warranties, you'll breathe new life into your PC investments and ensure that your PCs are fit for any disruption.

**Consider these  
Lenovo solutions:**



# IT Manager Planning Resumption

Over the last 12 months, IT Managers have been under pressure to deliver on their resumption planning solutions with limited resources. With 96% of SMBs experiencing an outage over three years, IT managers must implement solutions to maintain business operations for both short-term and long-term outages<sup>5</sup>. Additionally, with IT functions balancing multiple needs from email hosting, storage, backup and recovery, and network monitoring—they need support to manage disasters when they do occur.



**When the unforeseen does happen, IT managers supporting distributed teams need expert, fast, first-time resolution support. So that you can limit downtime, when it does happen, Lenovo gives you direct access to elite engineers through Premier Support. 88% of Lenovo customers indicate they would recommend Premier Support to a peer<sup>6</sup>. Put Premier Support into your resumption plan, and you can get access to the following services:**

- Advanced technical support 24x7x365, so you can limit downtime and resolve issues at speed.
- Get comprehensive hardware and software support, giving you end-to-end troubleshooting when the pressure is on.
- A single point of contact will help you simplify your end-to-end case management.
- Our technical account managers are proactive and at hand for escalation management.
- Incident management is one click away with the Lenovo Service Connect Portal for customized reporting and product support. Work smarter with universal one-cable connectivity and remote device management features designed especially for IT departments. Our Azure Sphere enabled smart docks connect securely to the cloud so your IT team can remotely manage, diagnose, update, and reboot them to keep workers productive no matter where they sit.

**With a larger endpoint security network, SMBs will need to ensure protection from advanced cyber threats such as ransomware, zero-days and phishing emails. Deploy next generation endpoint security solutions like BUFFERZONE, a containment technology that will empower employees to resume work from anywhere:**

- Isolates potential malicious content from web browsers, email attachments, and removable storage to prevent infections from affecting the rest of the computer.
- Maximize user productivity with seamless, unrestricted access to information, while empowering IT with a simple, lightweight and cost-effective solution for thousands of endpoints both inside and outside the corporate network.

**New Lenovo Managed Services help businesses make the most of their Microsoft 365 cloud-based tools to quickly resume working wherever they are and improve productivity, security and collaboration, consider the below services:**

- Microsoft Tenant Onboarding, automated or assisted on microsoft.com domain assignment. Help customers add their own domain via Microsoft Online Portal.
- Microsoft Cloud Migration, configure Exchange Online and migrate customer mailbox. Migrate customer files and folders to OneDrive or SharePoint.
- Application Configuration, configure Outlook Email client for users. Configure Teams application for collaboration.
- License Management, add or remove users. Assign user accounts to available licenses.



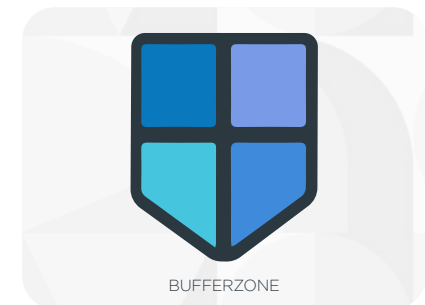
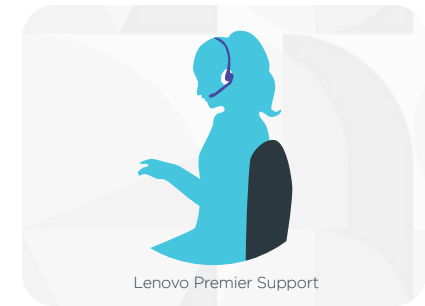
BUILT FOR BUSINESS

Intel vPro® Platform

**Smarter  
technology  
for all**

**Lenovo**

**Consider these  
Lenovo solutions:**



5: LogicMonitor 2020 IT Outage Impact Study

6: TBR, Premium PC Support Customer Satisfaction Research, March 2020

# Business Leaders Managing Resumption

43% of cyber-attacks target small to medium businesses (SMBs), and nearly 60% of small businesses that are breached, go out of business<sup>7</sup>. So, it's no wonder that having a solid technology resumption plan in place is top of mind for business leaders in growing medium size companies. Every leader's role is to ensure that a business keeps going, no matter what disruptions happen; every CEO and the managing director must lead a crisis effort to ensure their business gets up and running quickly.

**Some disruptions are inevitable. The art of keeping pace is to have solutions that help SMBs recover from the rare instances when downtime occurs. It's about finding the tools to reconnect, refocus and reset. Consider these solutions below,**

- Harness the power of reliable, easy-to-use data protection and recovery with automatic cloud backup. **Lenovo Think devices powered by Intel vPro® platform for unrivaled business class solutions** and have a cloud first design that seamlessly integrates with Microsoft 365, Microsoft Teams and OneDrive that will help them get back on their feet after any issues – and keep the ball rolling.
- Protect your data no matter where it lives with Carbonite Safe™. Carbonite Safe™ is a data backup solution designed for SMBs. It's easy to install and use, so you don't need specialized IT skills to ensure your data is safe and easily accessible.
- Protect files on servers, external storage devices, and up to 25 computers.
- Easy file recovery for computers infected by ransomware, without paying a ransom.
- Monitor online backups and access files from any device via a secure, web-based dashboard.
- Meet data retention requirements, with secure accessible cloud data protection with automatic back-up features.
- Other companies charge extra for support. Carbonite Safe™ includes support from an award-winning team of specialists.

**Get absolute visibility and control of your entire endpoint environment, Lenovo and Absolute® make it possible to streamline security and IT asset management so you can protect your devices, data, apps, and budget to quickly resume business as usual with minimal effort.**

- Absolute® on Lenovo Think Devices, Absolute's self-managed security solutions have you covered, every step of the way. There are multiple solutions to choose from depending on your business needs.
- Absolute® Visibility, ideal for IT admin. Maintain visibility of your devices whether on or off the network, all from one place. Use this single destination to easily pinpoint device geolocation, monitor usage and software, maximize device utilization and continually assess your device security posture.
- Absolute® Control, ideal for IT admin and security admin. Take full control of your endpoints and defend against cyber threats with a powerful lifeline to protect at-risk devices and data. Use Absolute Control to define geofences and detect unauthorized device movement, before taking action to make the device useless or remotely delete critical data.
- Absolute® Resilience, ideal for security admin. Establish resilient security management by ensuring your critical apps always remain healthy with self-healing critical endpoint controls. Remotely identify sensitive data, gain precise insights and act on endpoint vulnerabilities.



BUILT FOR BUSINESS

Intel vPro® Platform

**Smarter  
technology  
for all**

**Lenovo**

**Consider this Lenovo solution:**





Smarter  
technology  
for all

Lenovo

**Get your team back on their feet in  
no time after disruptions**

Contact Us on TechToday

