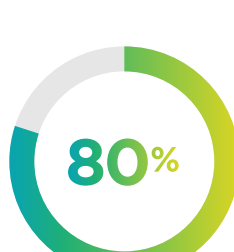


Make anyplace a collaboration space



Need to keep your workforce connected and productive in a work-from-anywhere world? ThinkSmart solutions are a smarter way forward.



Employees spend up to 80% of their time in collaborative work (meetings, phone calls, emails)¹



50% have regular issues with connections or sharing screens²



86% of employees say ineffective communications cause workplace failures³

Collaborating from the conference room



ThinkSmart Hub

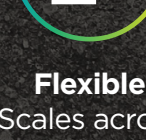
All-in-one-meeting room solution (hardware, software, services, support) preconfigured for Microsoft Teams Rooms



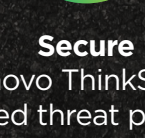
Efficient
One-touch, on-time starts



Great experience
360° microphone array and Dolby® Audio



Flexible
Scales across room sizes



Secure
Lenovo ThinkShield advanced threat protection, plus locking cable door



Manageable
Windows 10 IoT Enterprise and Intel vPro® platform built-in manageability

Collaborating from the office



ThinkSmart View

First-of-its-kind collaborative smart device, purpose-built for Microsoft Teams



Productive
Seamless integration with your ThinkPad and one-touch join for Teams meetings



Secure
Built-in camera shutter, microphone mute button, and 4-digit access PIN



Great experience
Clear video with 8" touchscreen and powerful built-in mics and speakers

Collaborating from home



ThinkPad Windows 10 Pro laptops

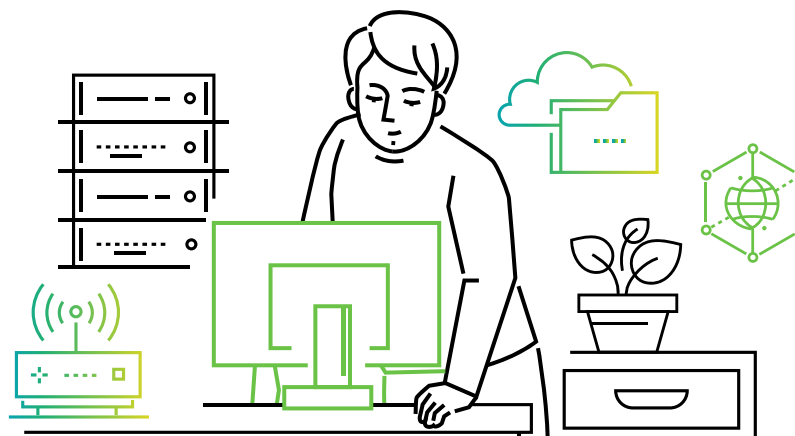
A new generation focused on a smarter workforce experience



Great features for collaboration

- Premium UHD, OLED, and Dolby Vision display options*
- Enhanced audio experience
- Modern Standby,† always-on, always-connected† experience, fast resume, and Wake on Voice†
- Webcam privacy shutter

I.T. can work from anywhere, too



ThinkSmart Manager

Cloud-based software designed for ThinkSmart Hub devices



Manageable from one console

- Deploy devices, configure rooms and networks, auto-update
- Monitor and manage Hub fleet in real time
- Solve issues proactively and remotely



Secure

- Protect devices with Lenovo Secure Authentication using TPM 2.0
- Elevate security with BIOS/SVP change management
- Prevent unwanted device access with remote USB port blocking and boot enable/disable



Welcome to the smarter workplace. All Lenovo ThinkSmart solutions are supported by our Smart Office Professional Services.

Learn more about ThinkSmart solutions at www.lenovo.com/ThinkSmart.

Find your company's smarter way forward at www.lenovo.com/EnterpriseSolutions.

¹ <https://hbr.org/2016/01/collaborative-overload>

² <https://www.barco.com/en/news/2016-05-12-how-problems-with-meeting-technology-impacts-the-it-manager>

³ <https://fierceinc.com/employees-cite-lack-of-collaboration-for-workplace-failures>

*A UHD OLED display with Dolby Vision support is optional on ThinkPad X13 Yoga. A UHD display with Dolby Vision support is optional on all ThinkPad T series with Intel processors. †Modern Standby is available on all ThinkPad T and X series models. Wake on Voice is optional on ThinkPad T series and X series. Always-on, always-connected may require separately purchased Wi-Fi or WWAN connectivity. Connection speeds will vary due to location, environment, network conditions, and other factors.