



Smarter
technology
for all

Lenovo

Lenovo Education Software Catalog

01

Security, Safety, and Device Management

Pages 3-6



Absolute Software

Endpoint visibility and control



SentinelOne

AI-driven endpoint security



Lightspeed Systems

Online learning safety and effectiveness



Google Workspace

Cloud computing, productivity, and collaboration tools



02

Instructional Resources

Pages 7-9



LanSchool

Classroom management software



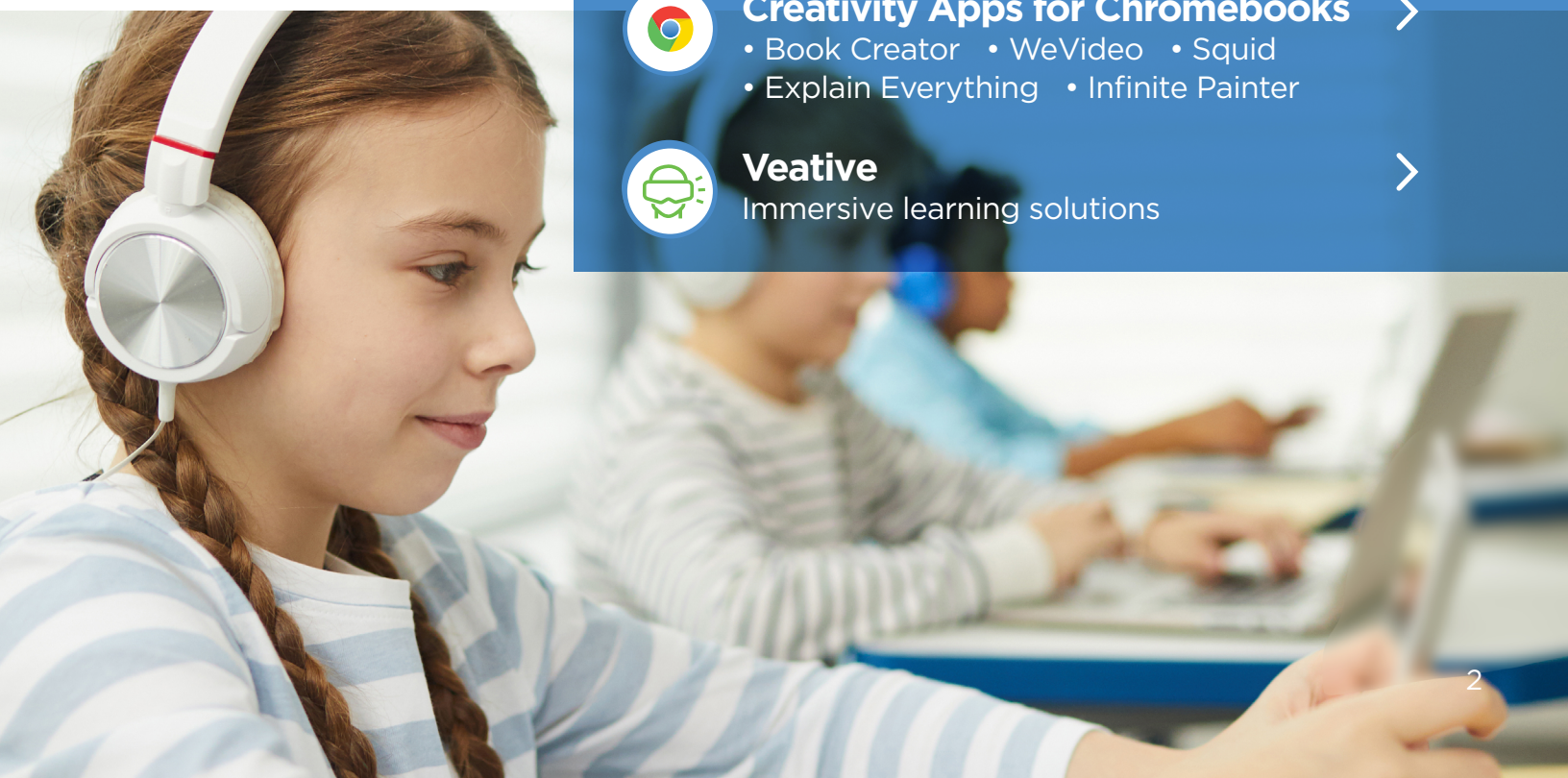
Creativity Apps for Chromebooks

• Book Creator • WeVideo • Squid
• Explain Everything • Infinite Painter



Veative

Immersive learning solutions



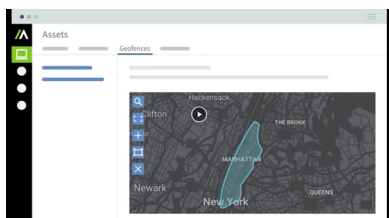
Make learning unbreakable

Manage and secure your educational devices and data with a persistent, undeletable connection.



What makes Absolute different?

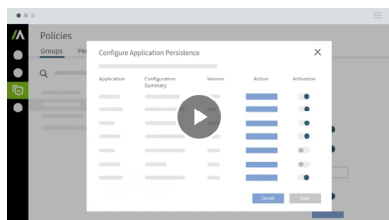
Absolute is the only endpoint security solution factory-installed by most major PC manufacturers. Since it is embedded in over half a billion endpoints, all you need to do is activate it for instant visibility and control.



Full geographic visibility

Full endpoint visibility

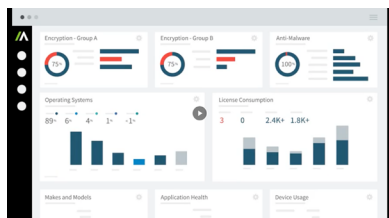
- Geolocate any device
- Risk alerts when controls are being bypassed
- Flag security issues — ensures CIPA compliance
- Know where all your sensitive data lives so you can protect it
- Usage reports for device and software utilization and website monitoring



Policy and update controls

Unbreakable security control

- Remote repairs and self-healing of critical software, even if reimaged or the hard drive is replaced
- Keeps critical applications like SCCM, antivirus, and VPN always installed and healthy
- Remote freeze and wipe



Unified management dashboard

Deploy easily and manage from anywhere

- Easily manage all devices from a unified, cloud-based console
- Persistent controls and configurations
- Manage at scale using automated workflows

Technical requirements for the Absolute agent:

- Windows 7, 8.1, or 10 (32 and 64 bit)
- Mac OS X 10.6 or later
- Android 4.4.2 or later
- Absolute Chromebook extension deployed through Google Admin Console

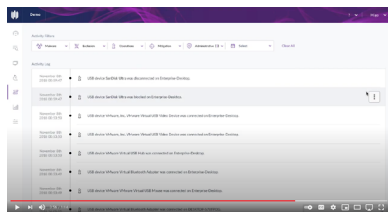
Prevent tomorrow's security threats today

Protect your school's networks with SentinelOne's AI-driven cybersecurity solutions that safeguard your valuable student data against advanced threats with autonomous protection, detection, and response.



What makes SentinelOne different?

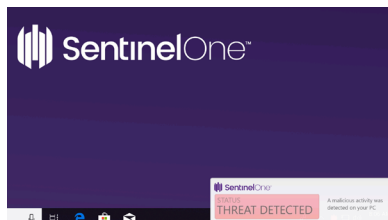
The autonomous endpoint protection saves you time by using multiple AI engines, providing visibility into all endpoints, and even rolling back threats, with a single agent.



Granular device control

Visibility and control of attack surface

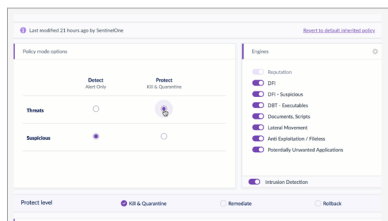
- Protect infrastructure from IoT attacks and compromised devices
- No hardware or network changes
- Manage device-based risk with Firewall Control and Device Control for USB and Bluetooth



Instant device protection

Automated detection and remediation

- AI-based prevention and detection that acts in real time
- Automatic or 1-click remediation and rollback
- Works without cloud connectivity



Network policy control

Centralized and flexible management

- Unify operations and administration with one agent and console
- Easy to deploy and manage
- Flexibility of custom administrative roles and site setup
- Can be deployed as cloud SaaS, hybrid, or on-premises

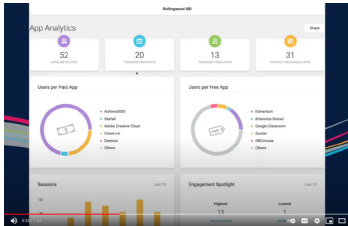
Technical requirements:

SentinelOne offers clients for

- Windows including legacy OSs such as Windows XP
- Mac OS
- Linux

Online learning safety and effectiveness

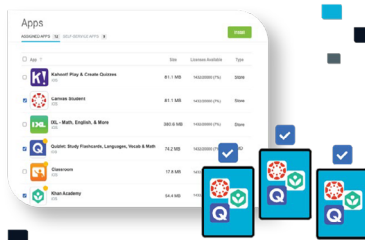
Lightspeed Systems® is trusted in 28,000 schools across 38 countries to deliver the safest, most effective online learning experience for every student. With Lightspeed Systems, everything your school or district needs to ensure the safest, most effective online learning experience possible is available with one partner.



Actionable, real-time insights

Lightspeed Analytics™

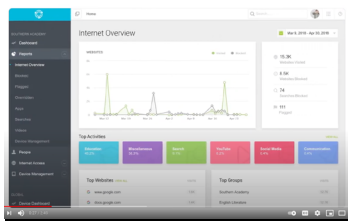
- Analyze adoption, identify utilization opportunities, and eliminate redundancy
- Inform ROI, track licenses, compare similar applications on usage, and identify redundant and underutilized apps



Visibility and policy controls

Lightspeed MDM™

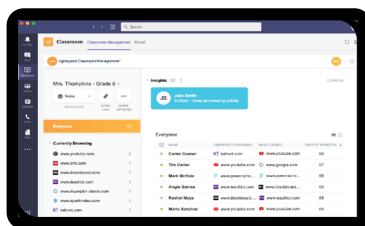
- Control school-issued devices remotely, set policies including access restrictions, and maintain data privacy
- Easily locate and recover devices that are lost or stolen



Consistent compliance

Lightspeed Filter™

- Monitor and control activity to maintain e-safety compliance, even with BYOD devices
- Leverage advanced AI to block inappropriate sites and content
- Gain visibility into students' mental wellness with activity logs



Effective, equitable learning

Lightspeed Classroom Management™

- Enable teachers to have complete control of classroom devices
- Push classroom content to all devices and block time-wasting Internet
- Receive real-time notification when a student is off task

Directory integration and sync:

- Google, Google Classroom
- Active Directory, Microsoft Azure AD
- All student information systems

Languages available:

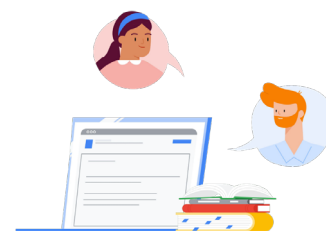
American English, British English, Danish, French, German, Indonesian, Italian, Malay, Portuguese (2), Simplified Chinese, Spanish (2)

Supported operating systems and browsers:

- Google: Chrome OS and Browser, Android OS
- Apple: Mac OS, Apple iOS
- Microsoft Edge, Windows, Internet Explorer
- Mozilla Firefox

Transform teaching and learning

Google Workspace for Education provides school communities with tools that elevate teaching, learning, collaboration, and productivity — all on one secure platform.



Simple and secure

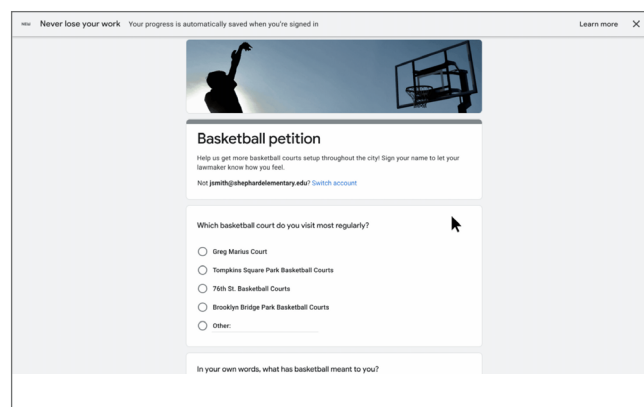
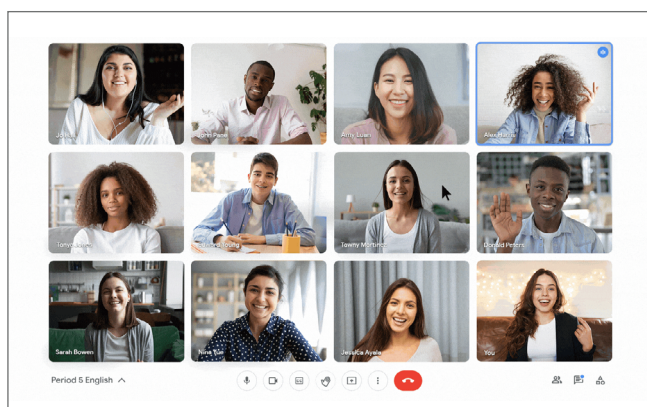
Engage your school community with easy-to-use tools that let individuals confidently communicate, collaborate, teach, and learn.

Trust in multi-layer, built-in security that meets rigorous privacy and compliance standards.

Helpful and Flexible

Real-time collaboration, instant connection, and efficient productivity help everyone stay focused on teaching and learning.

Leverage tools that evolve with the unique needs of your institution.



Free edition*

Google Workspace for Educational Fundamentals

A **free suite of tools** that enables collaborative learning opportunities on a secure platform.



Google Workspace for Education Standards

Advanced security and analytics tools to help reduce risks and mitigate threats with increased visibility and control across your learning environment.

Paid editions

Teaching and Learning Upgrade

Enhanced educator tools to help enrich communication and class experiences, and guide academic integrity.

Google Workspace for Education Plus

A **comprehensive solution** with advanced security and analytics, enhanced teaching and learning features, and more.

*G Suite for Education (soon to be Google Workspace for Education Fundamentals) is free for qualifying institutions. [Learn more](#).

Resources:

- Visit the [Google Workspace for Education website](#)

Technical requirements:

- See [Google Workspace Migration requirements](#)

Lenovo's classroom management solution that transforms teaching

Create meaningful 1:1 learning moments with Lenovo's classroom management software, LanSchool. As a pioneer and innovator in education, Lenovo's LanSchool has provided reliable, award-winning classroom management products for over 30 years.

Guide learning in a safe, online environment with features like:

- Thumbnail and full-screen monitoring
- Blank screen
- Limit web browsing
- Integrated online safety features
- Reporting to ensure compliance

Maximize teaching time and easily capture work with features like:

- Push website
- Snapshot students' screens
- Battery status

Google Classroom and Clever integrations

- Easy onboarding and provisioning of new users
- Provisioned via the cloud or locally

Clever



Google Classroom

Promote collaboration with powerful one-to-one and one-to-many features like:

- Messaging
- Raise Hand
- Screen Sharing



“LanSchool gives our teachers the tools to turn a potential distraction into an important one-on-one teaching opportunity. It has transformed how we use digital devices in all of our classrooms.”

– Chris Parker, Technology Coordinator

Technical requirements:

- Implemented through cloud-based or local hosting
- Cross-platform support for Windows, Mac OS, Chrome OS, iOS, and Android operating systems

Manage apps at scale

Discover Chromebook creativity apps that were designed with learning in mind and are easy to both use and manage. Seamlessly provision and manage education-ready app licenses through the Google Admin Console.

Video editing from WeVideo

- Inspire meaningful, deeper learning
- Easy-to-use cloud-based video creation tool
- Collaboration features

FREE TRIAL >

Multimedia books from Book Creator

- Combine text, images, audio, and video to create books, journals, comics, reports, and more
- Collaborate and publish features

FREE TRIAL >

Interactive whiteboard from Explain Everything

- Share ideas as an interactive project or video
- Add drawings, images, videos, and documents
- Team collaboration through browser

Digital note-taking from Squid*

- Take digital handwritten notes
- Markup PDFs, sign documents
- Organize notes into notebooks
- Share and casting options

Graphic design from Infinite Painter*

A professional vector graphics app with unparalleled toolset:

- 200 natural brushes
- Filters and other tools for photo editing
- Realistic blending and masking

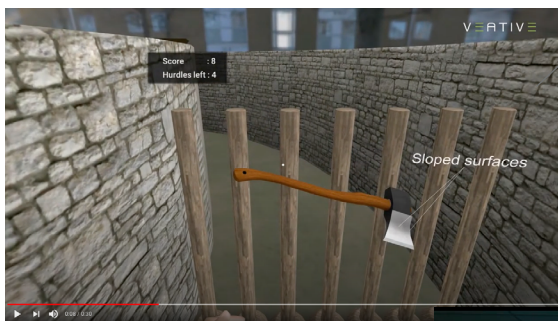
*requires stylus or Lenovo's Pencil Touch technology ([Learn more](#))

Administrators can install apps, activate app licenses, and track app usage throughout the school year — all from the Google Admin Console. With the Chrome Education Upgrade, managing a fleet of devices and apps is simple and seamless.

Connecting students with concepts in virtual reality or WebXR*

Veative is transforming the way virtual reality is used in education by combining powerful VR technology with research-based instructional practices, paired with analytics to track student progress. Also available in WebXR* on any device.

Physics without intimidation

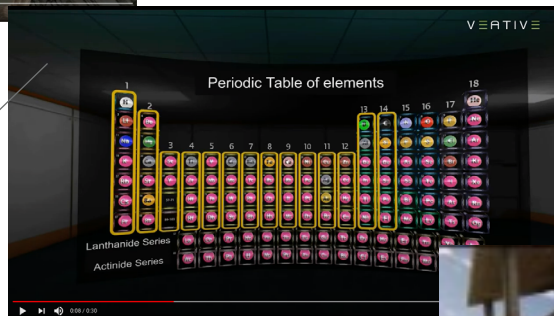


550+ interactive STEM modules

World's largest library of VR lessons

- Built to increase focus and knowledge retention
- All modules are standards-aligned
- 40 modules pre-loaded on Lenovo VR Classroom 2 headsets

Chemistry without lab hazards

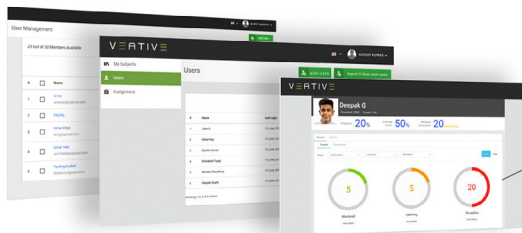


Math leveraging spatial intuition



Flexible deployment

- WebXR* modules enable VR classes on computers
- Built for deployment on Lenovo's VR Classroom 2 ([Learn more](#)) solution as well



Robust reporting and analytics

Inform teaching decisions with key learning metrics to provide a holistic view of a student's mastery

*Veative WebXR modules can be used on PCs, Macs, and Chromebooks with just a keyboard, mouse, or trackpad, and an up-to-date web browser.

Technical requirements:

- For the best experience, Chrome version 79 or higher is recommended.
- Veative WebXR modules are not supported on Android or iOS mobile devices or tablets.



Educational continuity: the future path for equitable learning

EdTech innovations have paved the way to the future of education, providing a path for teachers to plan and deliver lessons that support collaboration, allow for active engagement, and create a safe and inclusive environment for all learners.

And now, as educators plan for the future, Lenovo's education software portfolio can help your schools continue to provide flexible learning environments that meet the individual learning needs of every student.

Lenovo education portfolio

Lenovo devices are built for learning anywhere and everywhere.



PENCIL TOUCH TECHNOLOGY SCREENS

You can use a no. 2 pencil to interact directly on the 10-point multitouch screen — without marking or scratching it up! Pencil Touch is ideal for taking tests, drawing, and note taking. [Learn More](#)



DUAL CAMERAS

Our 720P self-facing and 5MP world-facing cameras enable students and teachers to create and share content, staying connected with each other in more meaningful ways.



EDUCATION-GRADE DURABILITY

360° rubber bumpers, pry-proof keys, reinforced glass and buttons, and impact-tested touchpads mean it can stand up to common accidents in a typical student's day.



WATER RESISTANCE

Spills and splashes are bound to happen — from the chemistry lab to the kitchen table — but a little liquid is no match for our water resistant* keyboards.



RELIABLE CONNECTIVITY

Without stable wi-fi connections digital learning out of school can be difficult. This is why we offer 4G and LTE connected devices to ensure that all students have a reliable internet connection**

*up to 330 ml

**available on 100e Chromebook Gen 3, 300e Chromebook Gen 3, 500e Chromebook Gen 3, 300w Gen 3 (Windows)