

Positively accelerating evolution

Fast track digital
transformation to a work-
from-anywhere workplace.



Built for Business

Intel vPro®
platform



Windows 11

Lenovo recommends
Windows 11 for business

Smarter
technology
for all

Lenovo



<https://techtoday.lenovo.com>



In the last year, between
89-94%

of SMBs added online operations or went completely online. Many three-year digital transformation strategies were rolled out in less than three months – with no additional investment or additional resources.¹



The 2-in-1 Lenovo ThinkBook 14s Yoga *i* powered by **12th Gen Intel® Core™ processor, Intel® Iris® Xe graphics** and running on **Windows 11 Pro**, elevate creativity and productivity.

1. Lenovo, The Future of Work and Digital Transformation Report 2021.



Powered by 12th Gen
Intel® Core™ processor



<https://techtoday.lenovo.com>

**Smarter
technology
for all**

Lenovo

Modernization

Supercharge modernization

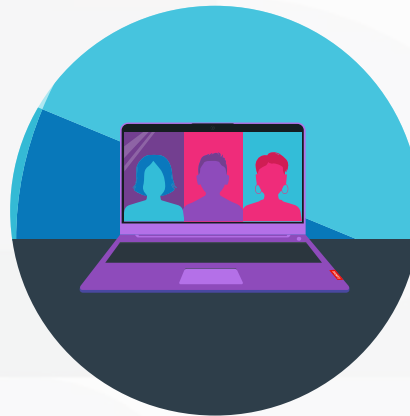
The traditional daily office routine has forever changed.

With on-the-go workforces, collaborations across geographic locations in multiple time zones and hybrid office models on the rise, small to medium businesses (SMB's) need technology that keeps up. Having the right solutions in the modern workplace unlocks new opportunities to collaborate, connect and stay productive from anywhere.

Up until now, the struggle for IT decision makers (ITDMs) has been managing business-critical IT needs with solutions that don't detract from employees doing great work.



**Starting your journey
towards modernization.**



**SMBs with a
growing workforce.**



**Reinvent your
business model.**



Intel vPro®
platform

Built for Business



Lenovo recommends
Windows 11 for business

<https://techtoday.lenovo.com>

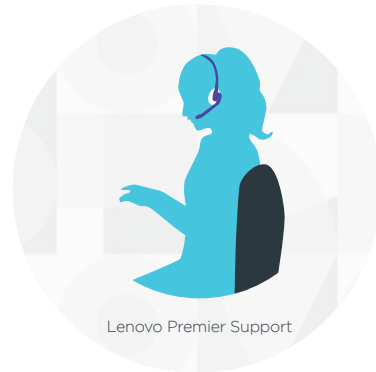
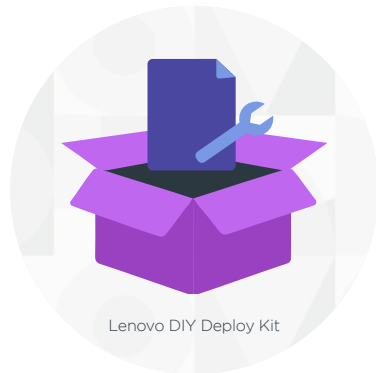
**Smarter
technology
for all**

Lenovo

Starting your journey towards modernization

For teams beginning their transition to modern IT, DIY Deploy offers the launch pad – a bundled set of Lenovo Services to help IT groups deploy and manage their Lenovo devices. With this solution, IT teams use Lenovo-developed provisioning tools to tackle preliminary work and implementation while end users receive everything needed to manage their own device setup.

Consider these Lenovo services:



SMBs looking for a Microsoft Autopilot solution, with a low degree of IT initial device set up effort consider Lenovo DIY Deploy kit to make the most of your Microsoft 365 cloud-based tools.

- Get a custom preload. Ready to provision deployments will ensure swifter deployments and greater flexibility for your business as you scale.
- Save time as you scale. Reduce IT support calls with Drop in the Box, plus your employees will receive custom documentation with every new device in the shipping box.
- Have better control over your new devices with Asset tagging. You can protect your Lenovo Think devices with traceable, tamper – proof labeling whether it's delivered at the office or at your workers residence.
- Get custom BIOS settings, Lenovo will help you determine your organizations requirements on how systems operate before the operating system even loads, and then deploy that BIOS.
- As the first OEM PC Partner for Microsoft Autopilot. Lenovo offers cloud-based deployments for our latest ThinkBook Windows 11 devices.

Invest in modern cloud optimized PCs. Lenovo Think devices and solutions have a cloud first design that seamlessly integrates with the Microsoft 365 platform for reliable, easy-to-use data protection. Look out for the below smart features that will help modernize your business.

- Lenovo ThinkBook 15 Gen 4 *i*, features biometric authentication. Smart Power On fingerprint readers (FPR) to provide secure authentication.
- Lenovo ThinkBook devices provide easy accessible file storage for remote and mobile workers so they can access files in the cloud securely from anywhere using SaaS apps like Microsoft OneDrive for Business.
- The ThinkBook 13s Gen 4 *i*, designed on the **Intel® Evo™ platform** for a verified exceptional experience and running on **Windows 11**, instantly connects you to our Lenovo Premier Support service for advanced tech support and trouble shooting.

More devices in more locations makes it harder for you to offer dedicated support and troubleshooting for your teams. Lenovo Premier Support provides direct access to elite level techs for your people. No scripts, just fast, first-time resolution to avoid frustration and keep productivity high.

- Advanced technical support, 24x7x365, in more than 100 markets
- Comprehensive hardware and OEM software support
- Single point of contact for simplified end-to-end case management
- Technical account managers for proactive relationship and escalation management
- Priority on service delivery and repair parts



<https://techtoday.lenovo.com>

Smarter
technology
for all

Lenovo

SMBs with a growing workforce

Lenovo's Ready to Deploy Kit permits IT teams to control much of the imaging and versioning with Lenovo handling the preload. With limited setup tasks, end users can swiftly get to work with their new devices. And for IT teams that are stretched thin, Lenovo's Instant Productivity Kit offers a comprehensive deployment and maintenance solution to ease upfront work. With this solution, Lenovo builds the image to your specs and end users are ready to work immediately.

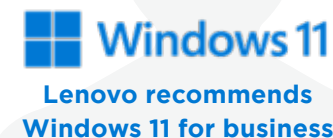
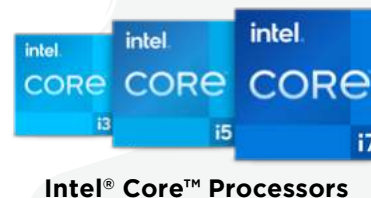
Lenovo Instant Productivity Kit, Lenovo Ready to Deploy Kit integrates with any Enterprise Mobility management and gives you a low degree of end user initial device set up and post – deployment maintenance.

- Get a custom preload. Ready to provision deployments will ensure swifter deployments and greater flexibility for your business as you scale.
- Save time as you scale. Reduce IT support calls with Drop in the Box, plus your employees will receive custom documentation with every new device in the shipping box.
- Have better control over your new devices with Asset tagging. You can protect your Lenovo Think devices with traceable, tamper – proof labeling whether it's delivered at the office or at your workers residence.
- Get custom BIOS settings, Lenovo will help you determine your organizations requirements on how systems operate before the operating system even loads, and then deploy that BIOS.
- As the first OEM PC Partner for Microsoft Autopilot. Lenovo offers cloud-based deployments for our latest ThinkBook Windows 11 devices.
- Get all the before mentioned services plus; 3 – year cloud recovery and management and scale without any worries, as Lenovo will help you swiftly recover from hardware and software failures.
- This can integrate with any Enterprise mobility management. Lenovo's Advanced Deployment Services (ADS) Cloud Provisioning is a portable, self-contained provisioning solution to simplify deployments.

Organizations need future-focused devices that will match the speed, responsiveness, security and versatility expected by employees in the modern workplace.

- Lenovo ThinkBook PCs, powered by **12th Gen Intel® Core™ processors** and **Windows 11 Pro** come packed with features that help people work smarter, faster and better – from anywhere.
- The new-age features like Intel® Thunderbolt™ 4 on Lenovo ThinkBook Gen 4 *i* devices give workers the ability to make lightning-fast data transfers or host high-quality video streams while simultaneously charging USB devices.
- Make the most of the Windows 11 Modern Standby quick wake up and experience the benefit of 2x faster launches across documents, spreadsheets and presentations.
- Power up security with Lenovo Think devices that have all the essential security features already built in. Windows Hello on all Lenovo laptops and PC's means you can sign in with facial or fingerprint recognition.

Consider these Lenovo services:



**Smarter
technology
for all**

Reinvent your business model

Digital transformation is challenging. Having IT managing multiple Microsoft 365 apps, accounts and cloud migration doesn't maximize workflow. Lenovo Managed IT Services provides practical, cost-effective and scalable way for IT decision makers to free up their time and turn their attention towards strategic matters.

A combination of modern technology and comprehensive SaaS services will ensure workplaces of the future have minimized disruption and enhanced employee experiences with less effort.

Lenovo lifecycle services are available to help organizations plan, manage and support their Lenovo PC fleets. From Windows 11 transitions to Unified Endpoint Management, Lenovo has solutions to help companies embrace new and scale with ease.

- Planning Solutions, strategy, assessment and personal consultation
- Configuration Solutions, customized hardware and software setup (BIOS settings, imaging, device registration)
- Deployment Solutions, services to get employees productive with Lenovo devices
- Support and Protection Solutions, relieving IT teams and keeping devices operating at peak performance.
- Management Solutions, onsite help desks, security and compliance monitoring and management, inventory control
- Asset Resale and Recycle Solutions, maximizing residual value while ensuring data security and environmental compliance

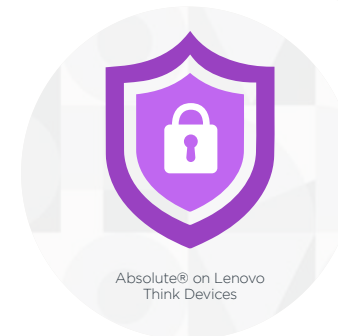
Transform your organization with Lenovo Device as a Service:

- Revolutionize your IT organization with expert services, smarter automation, and intelligence. Build a custom DaaS solution with any combination of options from Lenovo's full services catalog, including transformative services such as: Custom Ordering Portal, Service Delivery Manager Encryption, Cloud Deploy/recovery, Unified Endpoint Management, Accidental Damage Protection, Keep Your Drive, and flexible Lenovo Financial Services financing.

Get absolute visibility and control of your entire endpoint environment, accelerate your journey to modernization with Lenovo and Absolute® make it possible to streamline security and IT asset management so you can protect your devices, data, apps, and budget.

- Absolute® on Lenovo's Think Devices, Absolute's self-managed security solutions have you covered, every step of the way. There are multiple solutions to choose from depending on your business needs.
- Absolute® Visibility, ideal for IT admin. Maintain visibility of your devices whether on or off the network, all from one place. Use this single destination to easily pinpoint device geolocation, monitor usage and software, maximize device utilization and continually assess your device security posture.
- Absolute® Control, ideal for IT admin and security admin. Take full control of your endpoints and defend against cyber threats with a powerful lifeline to protect at-risk devices and data. Use Absolute Control to define geofences and detect unauthorized device movement, before taking action to make the device useless or remotely delete critical data.
- Absolute® Resilience, ideal for security admin. Establish resilient security management by ensuring your critical apps always remain healthy with self-healing critical endpoint controls. Remotely identify sensitive data, gain precise insights and act on endpoint vulnerabilities.

Consider these Lenovo services:



3: The Future of Work and Digital Transformation 2021



Intel vPro®
platform



<https://techtoday.lenovo.com>

Smarter
technology
for all

Lenovo

Smarter
technology
for all

Lenovo

Positively accelerating evolution

Fast track digital transformation to a work-from-anywhere workplace.

Contact Us on TechToday



Intel vPro®
platform



<https://techtoday.lenovo.com>