

Smarter creates the future

ThinkStation P620

M&E SOLUTION BRIEF



Lenovo

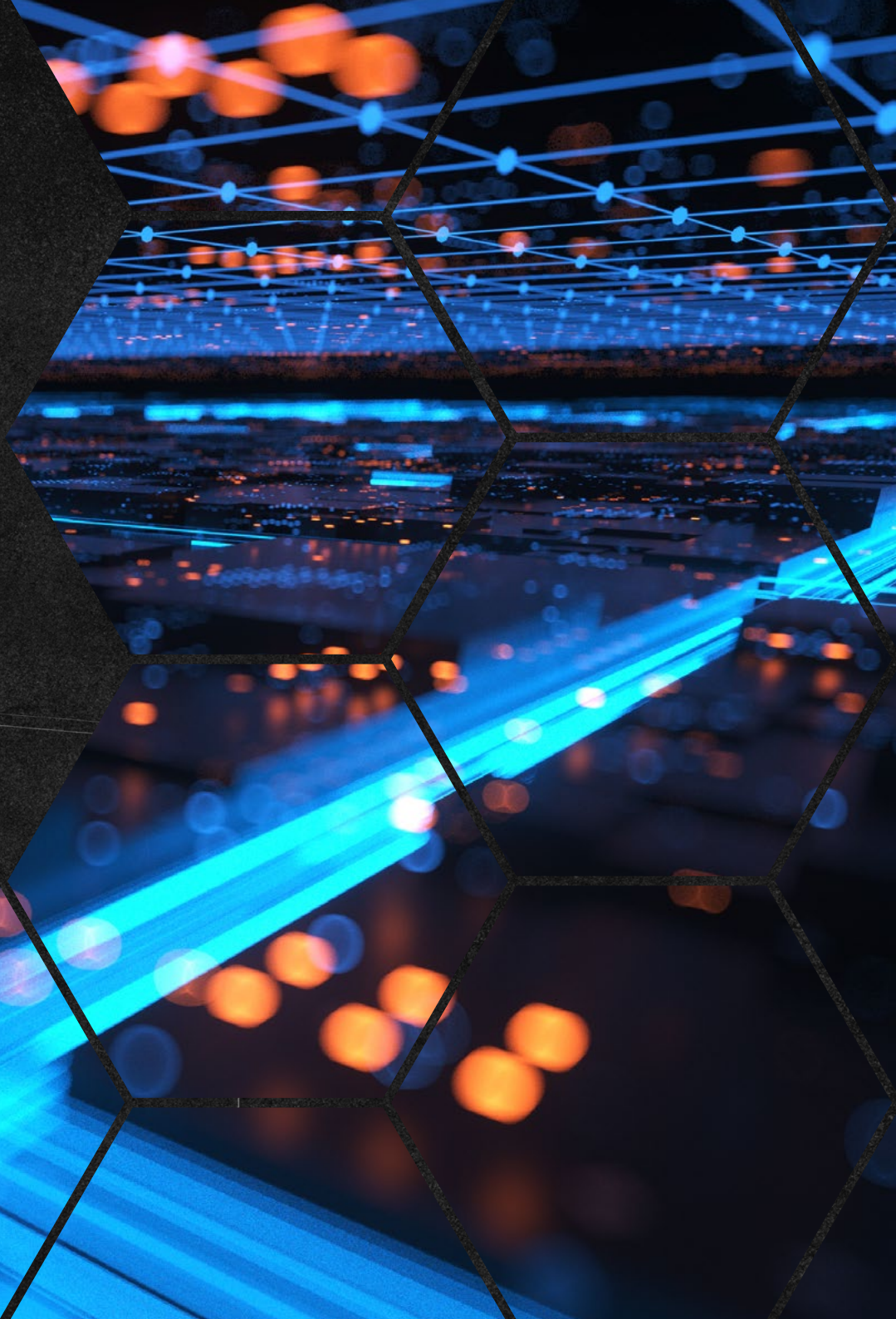
A powerful solution for complex IT requirements

Designed specifically to provide fast, reliable processing power, the ThinkStation P620 workstation has the specifications professionals from all industries need when working with complex applications.

The ThinkStation P620 combines the professional power of both AMD Ryzen™ Threadripper™ PRO computing with NVIDIA RTX™ professional graphics capability to directly address the technological complexity that IT departments often face. Offering the first single 64-core CPU of its kind with PCIe Gen 4 technology, the P620 allows companies to scale up while easily managing the technology that is powering their growth.

Perfect for any production function across film, television, and game development, no other workstation offers as much flexibility and power in a single CPU workstation package.

With enterprise-grade features, software certification, and security, this system supplies power and speed to superusers when they need it most. Empower your workforce with the next generation of workstation technology and enjoy the endless possibilities the ThinkStation P620 offers.



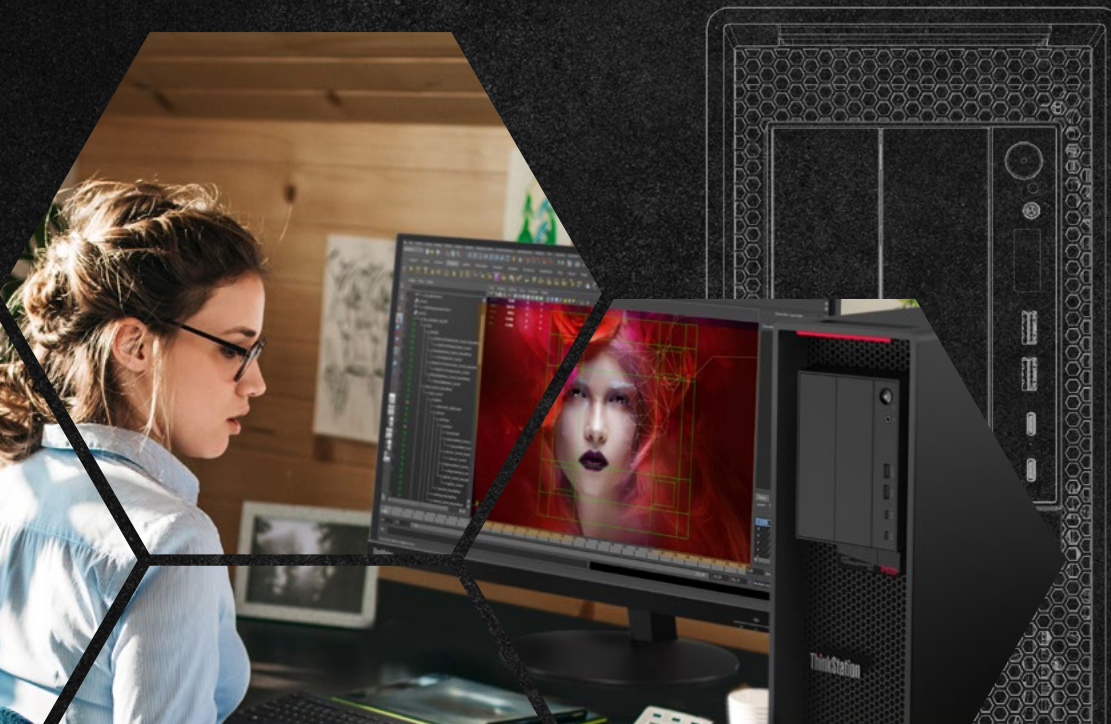
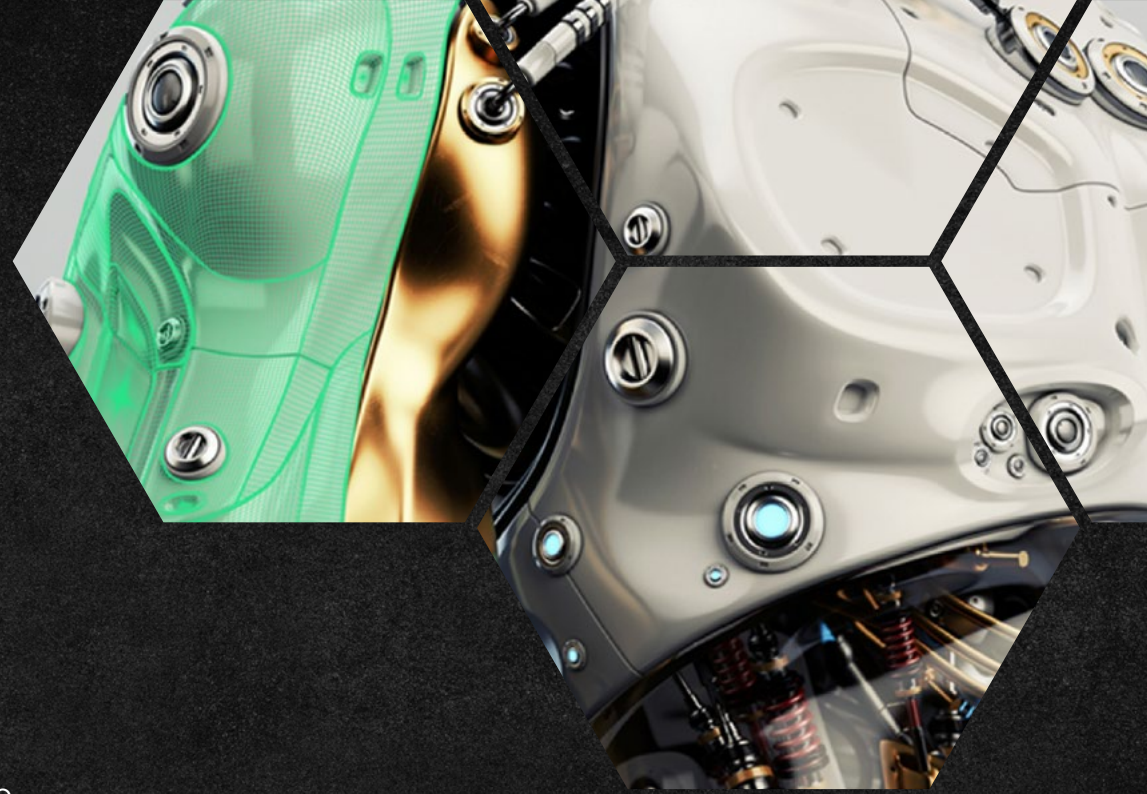
How the ThinkStation P620 enhances M&E workflows

The P620 delivers what is most important for you as an artist: a platform that can keep up with the speed of your creativity.

3D Modelers and Animators

Workflow: Modeling, texturing, rigging, animation, and simulation

Description: Perfect for animation specialists creating photorealistic or stylized characters, environments, and props for film, television, and gaming. Most 3D applications operate best with high-frequency CPUs, and the P620 delivers up to 4.0GHz (at 12 cores) with AMD's Threadripper PRO CPU. PCIe Gen 4 facilitates faster read/write times and graphics performance. The NVIDIA RTX professional GPU accelerates 3D modeling and animation workflows with real-time ray tracing and AI enhanced tools. The P620 provides a flexible platform to maximize your productivity and creative capabilities.



Compositors, Editors, and Colorists

Workflow: Adding and removing elements within an image or image sequence, editing and color correction

Description: Artists tasked with bringing the director's vision to life need a workstation that is capable and can reliably run at peak performance. The P620 delivers both high clock speed and high core count CPUs—ideal for compositing, editing, and creative finishing solutions. With 8-channel memory architecture and 10Gb Ethernet included, you have what you need to take on the most complex and challenging projects.



How the ThinkStation P620 enhances M&E workflows

Release & Build Specialist

Workflow: Prepare, configure, test, and oversee the game build process

Description: Specialists managing the game build process, whether for mobile, console, or PC titles, need a workstation that minimizes build times. With fast, high core count CPUs, ample fast storage and the ability to move data on and off the build system via 10Gb Ethernet, the P620 delivers the capabilities today's game developers require.

Rendering Specialist

Workflow: Render project setup, monitor, and review

Description: Ideal for rendering specialists creating photorealistic and stylized renderings for film and television. With never-before-seen compute capabilities in an affordable package, the P620 provides high core count, high frequency CPUs. NVIDIA RTX technology delivers state-of-the-art model visualization faster than ever before, with AI-enhanced tools that automate and reduce render time and cost per frame for tedious, time-consuming tasks.



P620 configurations for M&E workflows

3D Modelers & Animators

Workflow: Modeling, texturing, rigging, animation, and simulation

CPU: Threadripper PRO (12 cores @ 4GHz)
GPU: NVIDIA RTX 5000
Memory: 32GB, 3200MHz, ECC
HDD 1: 1TB M.2 SSD (OS/apps)
HDD 2: 2TB M.2 SSD (content)

Compositors, Editors, and colorists

Workflow: Editing images or image sequences and color correction

CPU: Threadripper PRO (16 cores @ 3.9GHz)
GPU: NVIDIA RTX A5000
Memory: 64GB, 3200MHz, ECC
HDD 1: 1TB M.2 SSD (OS/apps)
HDD 2: 2TB M.2 SSD (cache/scratch)

Rendering Specialists

Workflow: Render project setup, monitor, and review

CPU: Threadripper PRO (64 cores @ 2.7GHz)
GPU: Dual NVIDIA RTX A6000
Memory: 128GB, 3200MHz, ECC
HDD 1: 1TB M.2 SSD (OS/apps)
HDD 2: 2TB M.2 SSD (content)

Release & Build Specialists

Workflow: Prepare, configure, test, and oversee the game build process

CPU: Threadripper PRO (64 cores @ 2.7GHz)
GPU: NVIDIA RTX 3080
Memory: 256GB, 3200MHz, ECC
HDD 1: 1TB M.2 SSD (OS/apps)
HDD 2: 2TB M.2, SSD (content)

Performance Gains for ISV applications include:



Transforming what is possible in a single-CPU workstation

The ThinkStation P620, with its game-changing capabilities, is perfect for any production function across the film, television, and game development industries.

As project size and complexity continue to evolve across organizations, power users are finding their current systems struggle to keep up with their scaling workloads. The P620 delivers a powerful solution to these difficult challenges.

Collaborating with NVIDIA means our workstations are powered by NVIDIA RTX professional graphics, effortlessly tackling even the most complex visual workflows. Our workstations enable power users to create revolutionary products, design energy-efficient buildings, produce groundbreaking visual effects, develop the next chemical compound for drug discovery, and process tens of thousands of images in a 3D scan—better, smarter, and faster than ever before.

AMD
THREADRIPPER
PRO



For more information on the ThinkStation P620, please visit: www.Lenovo.com/thinkstationP620
©2021, Lenovo Group Limited. All rights reserved.



Game Chaging Power

Configured to meet your unique needs, the P620 provides 12, 16, 32, and 64-core high-frequency Threadripper PRO CPUs combined with PCIe Gen 4 for the fastest data read/write times. Coupled with support for the new NVIDIA RTX A6000 graphics and 8-channel memory architecture, the P620 provides limitless power, reliability, and flexibility.

Stunning Visuals

Pair the ThinkStationP620 with dual P27u or P32u displays for optimal productivity and user experience, featuring QHD resolution, daisy-chain connectivity, and factory color calibration, our professional displays enable a great out-of-the-box experience with simplified set up and deployment.

Lenovo