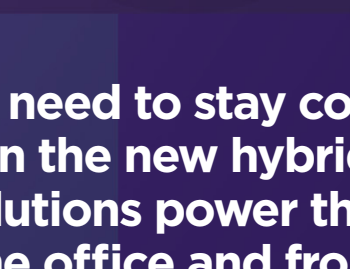
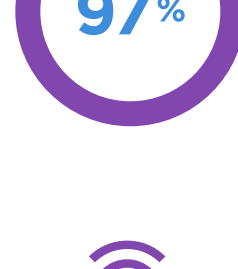


# Make anyplace a collaboration space



Employees need to stay connected and productive in the new hybrid work world. ThinkSmart solutions power the future of work from the office and from home.



97% of knowledge workers are using collaboration platforms.<sup>1</sup>



66% agree collaboration tools improve productivity and efficiency.<sup>1</sup>



83% of IT leaders expect 50% of work will be done outside the traditional office.<sup>1</sup>

## Collaborating from the conference room



### ThinkSmart Hub

All-in-one room system available for Microsoft Teams Rooms



#### Efficient

One-touch, on-time starts



#### Streamlined

20% smaller footprint and One Cable mechanism



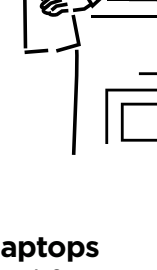
#### Flexible

Works for multiple room sizes and UC platforms



#### Secure

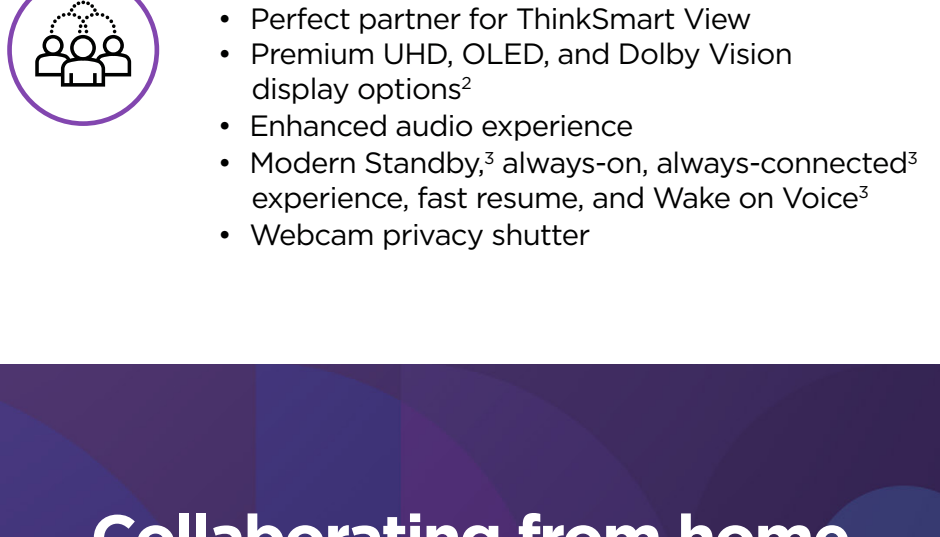
Lenovo ThinkShield advanced threat protection, plus locking cable door



#### Manageable

ThinkSmart Manager, Windows 10 IoT Enterprise, and Intel vPro<sup>®</sup> platform

## Collaborating from the office



### ThinkPad<sup>®</sup> Windows 10 Pro laptops

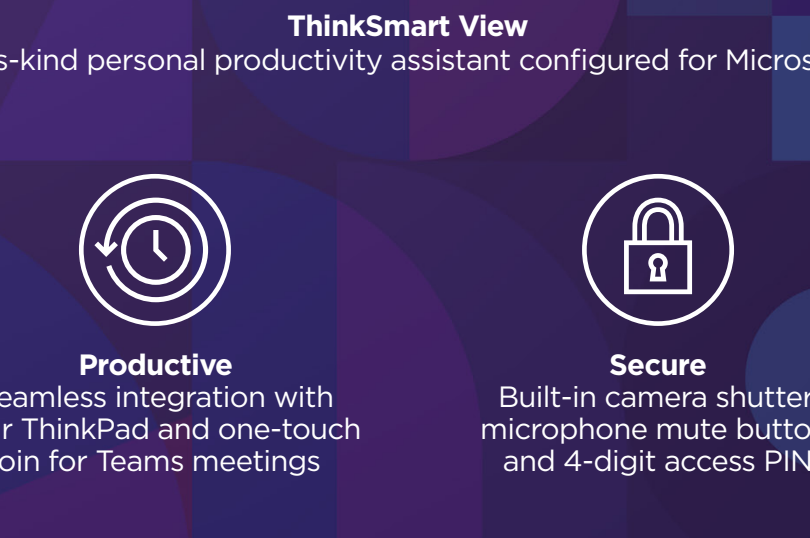
A new generation focused on a smarter workforce experience



#### Great features for collaboration

- Perfect partner for ThinkSmart View
- Premium UHD, OLED, and Dolby Vision display options<sup>2</sup>
- Enhanced audio experience
- Modern Standby<sup>3</sup>, always-on, always-connected<sup>3</sup> experience, fast resume, and Wake on Voice<sup>3</sup>
- Webcam privacy shutter

## Collaborating from home



### ThinkSmart View

First-of-its-kind personal productivity assistant configured for Microsoft Teams



#### Productive

Seamless integration with your ThinkPad and one-touch join for Teams meetings



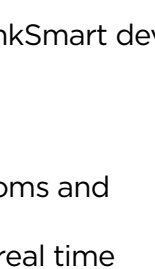
#### Secure

Built-in camera shutter, microphone mute button, and 4-digit access PIN



#### Great experience

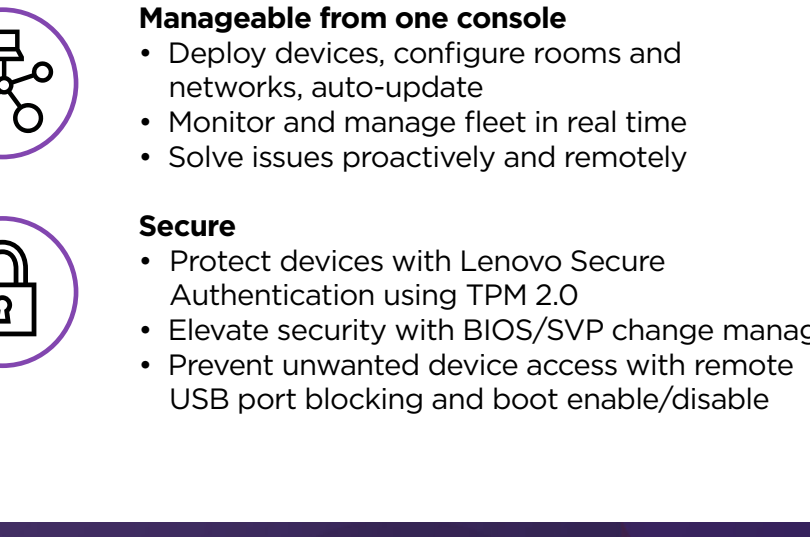
Clear video with 10.1" touchscreen and powerful built-in mics and speakers



#### VIP support

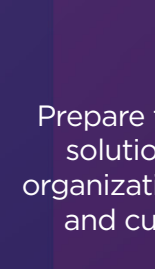
Direct 24x7x365 access to our most elite technicians with Lenovo Premier Support

## IT can work from anywhere, too



### ThinkSmart Manager

Cloud-based software designed for ThinkSmart devices



#### Manageable from one console

- Deploy devices, configure rooms and networks, auto-update
- Monitor and manage fleet in real time
- Solve issues proactively and remotely



#### Secure

- Protect devices with Lenovo Secure Authentication using TPM 2.0
- Elevate security with BIOS/SVP change management
- Prevent unwanted device access with remote USB port blocking and boot enable/disable

## Collaboration solutions that super-charge productivity

Tailored, turnkey solutions in the modern workplace empower your people and elevate your business.



#### Assess

Prepare for your Smart Office solution deployment with organization-specific evaluation and customized guidance



#### Deploy

Hit the ground running with virtual deployment, installation, and integration assistance



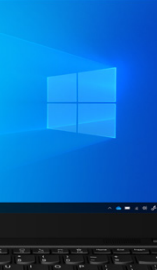
#### Train

Interactive use case training for all audiences helps you get the most from your technology



#### Maintain

Keep your devices in top working order with on-call services



#### Onsite

White glove service completes physical setup, installation, configuration, and device troubleshooting

Welcome to the future of work. All Lenovo ThinkSmart solutions are supported by our Smart Collaboration Professional Services. Learn more about ThinkSmart solutions at [www.lenovo.com/FlexibleWorkforce](http://www.lenovo.com/FlexibleWorkforce)

#### SOURCES

1. Lenovo, "The Future of Work and Digital Transformation," February 2021
2. A UHD OLED display with Dolby Vision support is optional on ThinkPad X13 Yoga. A UHD display with Dolby Vision support is optional on all ThinkPad T series with Intel processors.
3. Modern Standby is available on all ThinkPad T and X series models. Wake on Voice is optional on ThinkPad T series and X series. Always-on, always-connected may require separately purchased Wi-Fi or WWAN connectivity. Connection speeds will vary due to location, environment, network conditions, and other factors.