



**Smarter
technology
for all**

Lenovo

Make the impossible possible with **Lenovo EPC300.**

Rapidly roll out your own smart IoT applications with a Lenovo EPC300 edge computing infrastructure. Packed with high-performance, cost-effective CPUs, the EPC300 has the power to handle all your real-time data aggregation and processing. It also doubles as an IoT gateway with diverse wired and wireless connections built right in.

The EPC300 filters and forwards only relevant IoT data to the cloud or your data center, saving network bandwidth and storage costs. True to the Lenovo brand, this fanless IoT device is built to withstand rugged industrial environments from 0° to 50°C. Flexible mounting options paired with real-world digital I/O connectors allow you to install it just about anywhere.



POWER

Intel® 8th WHL-U processors, up to 256GB of SSD storage, up to 1TB of HDD storage, and native digital I/O connections create a robust IoT edge infrastructure.



SECURITY

Partition the dual Ethernet ports, using one for local communications and one for the WAN, to block intrusions originating at remote IoT devices.



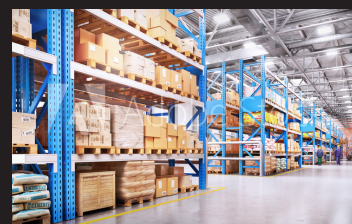
COMMUNICATIONS

Use it as an IoT gateway, connecting devices supporting dissimilar communications protocols across wired and wireless connections.



MANAGEABILITY

Compatible with the Microsoft® Azure IoT Edge and Amazon Web Services (AWS) IoT Greengrass platforms.



With 25 billion connected IoT devices predicted by 2021, it's time to find a reliable and affordable edge computing infrastructure that can support your growing IoT environment.*

MAKE YOUR EDGE A LENOVO SMART EDGE. Visit www.lenovo.com/smartedge

*Source: <https://www.gartner.com/en/newsroom/press-releases/2018-11-07-gartner-identifies-top-10-strategic-iot-technologies-and-trends>