



Windows 10

Lenovo recommends
Windows 10 Pro for business

Smarter
technology
for all

Lenovo

The office has changed

Unlock the workday's full
potential with maximum
productivity.

www.lenovo.com



Lenovo recommends
Windows 10 Pro for business

**Smarter
technology
for all**

Lenovo

70% of employees will be more
satisfied and productive if
they can work flexibly.¹



Productivity



**Smarter
technology
for all**

Lenovo

Ensuring productivity from anywhere

Lenovo recommends
Windows 10 Pro for business

Productivity is the key to enabling the flexible workforce

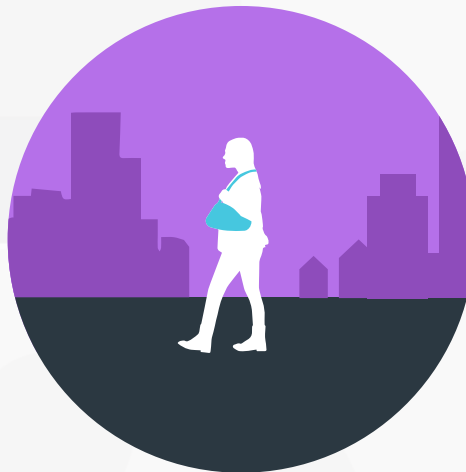
The old ways of working simply don't work anymore. Some people are working remotely, some from the office, and others in a hybrid model that blends the best of both worlds.

But the flexible workforce is a big challenge for IT. Employees now need solutions that help them stay productive working from anywhere in the world.

Lenovo delivers a range of hardware, software and solutions that supercharge productivity in the modern workplace. To help your employees to be more motivated, more satisfied and more productive no matter where they work.



**Employees on-the-go,
working remotely**



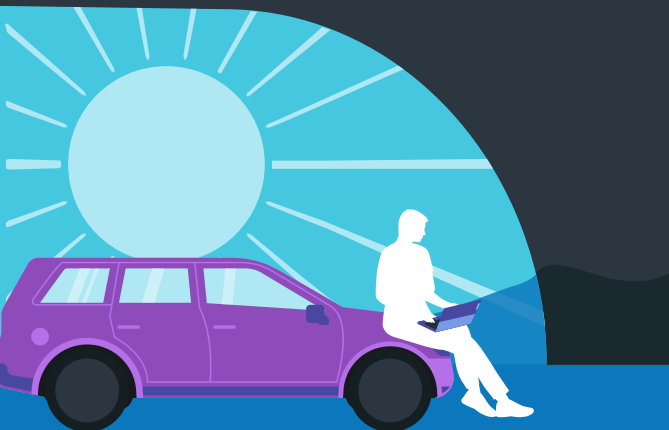
**Hybrid high-performance
workers**



**Supporting on-site
employees**

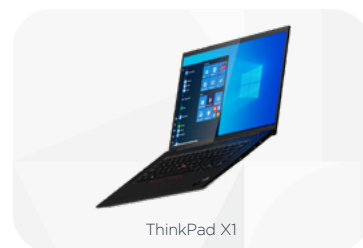
Employees on-the-go, working remotely

For many workers, COVID-19 has forced many to work remotely. Many roles, including customer-facing and mobile workers, have embraced remote working. Jobs that can be productive remotely include customer services, research analysts, data scientists, IT, and financial services who can work on the go with the support of data-intensive, mobile, computer power. The need to work remotely isn't constricted to occupation; it's based on the types of tasks, activities and performance power needed to perform a role. More than 20% of the workforce could work remotely three to five days a week as effectively as they could if working from an office¹.



Lenovo recommends
Windows 10 Pro for business

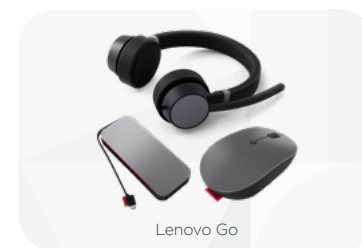
Consider these Lenovo solutions:



ThinkPad X1



ThinkBook P Series



Lenovo Go



ThinkCentre Tiny



2-in-1 ThinkBook 14s Yoga i

Choose high-performance PCs that are powered for productivity and reliability on-the-go like our ThinkPad X1 and ThinkBook P Series and ThinkCentre Tiny, all designed with performance wherever, whenever you need to be productive.

- When you need to work remotely, you need the flexibility and power of the 2-in-1 ThinkBook 14s Yoga i powered by the 11th Gen Intel® Core™ processor and Intel® Iris® X^e graphics. The device has 360-degree hinge that enables you to access the device in four flexible modes—laptop, tablet, tent, or stand.
- Working remotely needs additional security and connectivity. The ThinkPad X1, ThinkBook P Series and ThinkCentre are all supported by built-in security—with biometrics and AI-based security features— long battery life and secure WiFi or 4G/5G network connections.

When you're rushing between Team meetings, and meeting deadlines remotely, you need to ensure you've got the software and tools to keep going on, on-the-go, to stay productive.

- With Windows Ink, as part of Windows 10, you can capture your ideas quickly and naturally with a pen or touch-enabled device. When you need to capture information quickly, you can use Windows Snip & Sketch to annotate screenshots.
- Working with remote teams, you need quick, easy and secure ways to share files. With OneDrive, you can sync files between your computer and the cloud to find files and discover quickly when you're on a deadline remotely.

Managing a remote team requires reliable and portable tools that match the new world of remote, flexible work.

- Helping you bridge the gap is Lenovo Go: wireless mice, headphones with Active Noise Cancelling, power banks, and more—from the beach to the boardroom, to a home office, you'll have the devices to make remote working easy.
- When multitasking, you need to move from a wide variety of notebooks and devices to make sure that they work seamlessly together. To deliver this experience, ThinkPad Thunderbolt 3 Dock Gen 2 unlocks productivity across devices.

¹: McKinsey What next for remote work: An analysis of 2,000 tasks, 800 jobs in 9 countries.

Hybrid high-performance workers

Across all sectors, 38% of workers expect to continue remote working for two or more days a week². For architects and designers, and engineers, the ability to take your hardware on the go — moving quickly between home, studio and site — is vital to workflow. When you're working on high-demand, intensive tasks —such as real-time visualization and virtual reality applications —and need mobility and power—you can't compromise on your hardware. If you need to run CAD, data analysis, photorealistic renderings, or edit, you need lightweight mobility with power or workstations to run multiple applications simultaneously.



Lenovo recommends
Windows 10 Pro for business

When you're designing urban centres to product design, to engineering simulations and everything in between—ThinkStation and ThinkPad P Series workstations will support you to realize your vision, between the studio, on-site and home.

- The ThinkPad P series is a thin, light workstation for architects, designers and engineers to give them lightweight power. With superior reliability, unmatched processing power, and performance-driven innovation, the ThinkPad P1 Gen 4 16" - gives you processing power with Intel® Xeon® for CAD and CAE applications. Stylish, lightweight and packed full of power, the most discerning creative or engineering mind can blend form with function with elegant carbon-fibre weave and lightweight design, starting at just 1.8kg—all with the choice of Microsoft Windows or Linux® operating systems.
- The ThinkStation® Series, such as The ThinkStation® P720, is a feature-rich powerhouse with Intel® Xeon® processors to support heavy data processing needs. It is a powerful and extremely versatile dual-processor workstation designed for ultimate flexibility and customization; certified to run the most demanding ISV applications. For productivity in small spaces consider the ThinkStation® P350 Tiny, engineered to go where others can't. It offers uncompromising performance in a form factor that is 96% smaller than a traditional desktop. The industry's smallest workstation, at less than one liter total volume, combines simple and efficient design with the professional power of a workstation.

When you need to run programmes that need high processing power and reliability, our ThinkPad P Series and ThinkStations are certified, and Microsoft tools are one click away.

- Our ThinkPad P Series and ThinkStations are tested and certified by leading industry software vendors (ISVs) to run Engineering, Architecture, & Construction industry applications, including ANSYS Multiphysics, Autodesk CFD, Autodesk Revit, Bentley AutoPLANT, Creo CAM, Dassault ICEM Surf, Dassault CATIA, and many more.
- When you're working on intensive projects, and you need to accomplish more online securely, you need Microsoft Edge, the browser that is designed to increase speed and productivity to help you get more done. Combined with the option of 5G and built-in WiFi 6E, this powerhouse keeps you up and running wherever you need to work.

When working between home, studio or presenting to clients, you need the tools that help you multitask and manage your workflow.

- Managing multiple tasks at once, you need to master every part of your project from your monitor. That's where you need the ThinkVision P40x, the world's first Thunderbolt™ 4 professional monitor. Built for the creative eye, giving you consistent, reliable, true-to-life colours from any viewing angle thanks to its In-Plane Switching panel professional display that reproduces colour to 98% DCI-P3.
- The ThinkVision T24t puts success in both your hands thanks to its 23.8-inch, touch-screen, In-Plane Switching panel display. With multiple options for connectivity, this docking monitor lets you connect to desktops, laptops, made possible by the USB Type-C port that provides a true 1-cable solution, removing additional cables and complex setups.

**Smarter
technology
for all**

Lenovo

**Consider these
Lenovo solutions:**



2: McKinsey What next for remote work: An analysis of 2,000 tasks, 800 jobs in 9 countries.

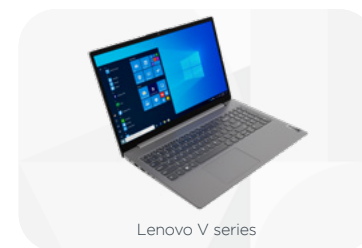
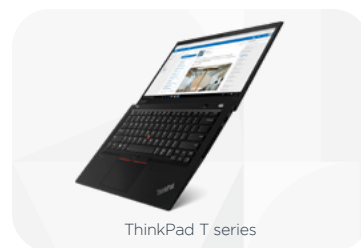
Supporting On-Site Employees

61% of the workforce in the United States can work no more than a few hours a week remotely or not at all. For example, consider research analysts, data scientists, or civil engineers who spend much of their time processing, analyzing, documenting and interpreting information on-site, at their desks. When you're crunching numbers and burning the midnight oil at the office, you need an optimized workspace, local connectivity and productivity-enhancing accessories.



Lenovo recommends
Windows 10 Pro for business

Consider these Lenovo solutions:



**Smarter
technology
for all**

Lenovo

When working on-site you need an ergonomic workspace supported by modular all-in-one PC's, that combine security and productivity features, built to perform and power an on-site workforce.

- Office-bound employees need to optimise their workspaces with efficient and compact devices, the ThinkCentre M Tiny Series, gives big performance all in a tiny device—giving you more space. Small enough to fit anywhere, these 1L PCs can slide into the back of a ThinkCentre Tiny-in-One display monitor, transforming your desk space into an all-in-one PC and Monitor.
- Our flagship laptop has you covered in the office, ThinkPad T Series are built to keep you productive with features like long battery life, blazing fast USB Type-C or Thunderbolt® ports, and powerful processing to keep you up and running. A lightweight, office laptop powered by Intel vPro® platform for unrivaled business class solutions.
- When you need to process information you need long-term performance and reliability of the Lenovo V series laptops, perfect for small and medium business professionals that need to work on-site, and perform for long hours. From videoconferences to presentations and multitasking.

Most on-site workers spend at least 3-6 hours – each day – on their PC. To keep you productive you need to defend against viruses and have tools to keep distractions at bay.

- Working on that deadline, you don't need social media or your notifications distracting you at work, that's where Windows 10 Focus Assist can keep you on track. Focus assist helps you get more done by easily blocking notifications, sounds, and alerts to create distraction-free work time.
- Protecting your computer from unwanted viruses is vitally important, Windows Defender Antivirus offers real-time protection functionality, which is updated regularly, and can protect against advanced infections. Helping you to optimise for uninterrupted productivity.

Configure your on-site space with accessories so you can create the ultimate ergonomic workspace, when you're working on-site.

- Create the ultimate PC setup with the Tiny-in-One 3 (24") Monitor that can house a Tiny PC, with FHD display, 1080p webcam with privacy shutter, and touchscreen, so you can build a compact workstation that fits your office needs.
- The ThinkVision T24t sets you up for productivity by putting success into your hands thanks to its 23.8-inch, touch-screen, In-Plane Switching panel display. Helping you to optimise your workspace the USB Type-C port that provides a true 1-cable solution, removing additional cables and complex setups. When multitasking, you need to move from a wide variety of notebooks and devices to make sure that they work seamlessly together. To deliver this experience, ThinkPad Thunderbolt 3 Dock Gen 2 unlocks productivity across devices.



Lenovo recommends
Windows 10 Pro for business

**Smarter
technology
for all**

Lenovo

The office has changed.

Unlock the workday's full potential with maximum productivity

[Learn More](#)

