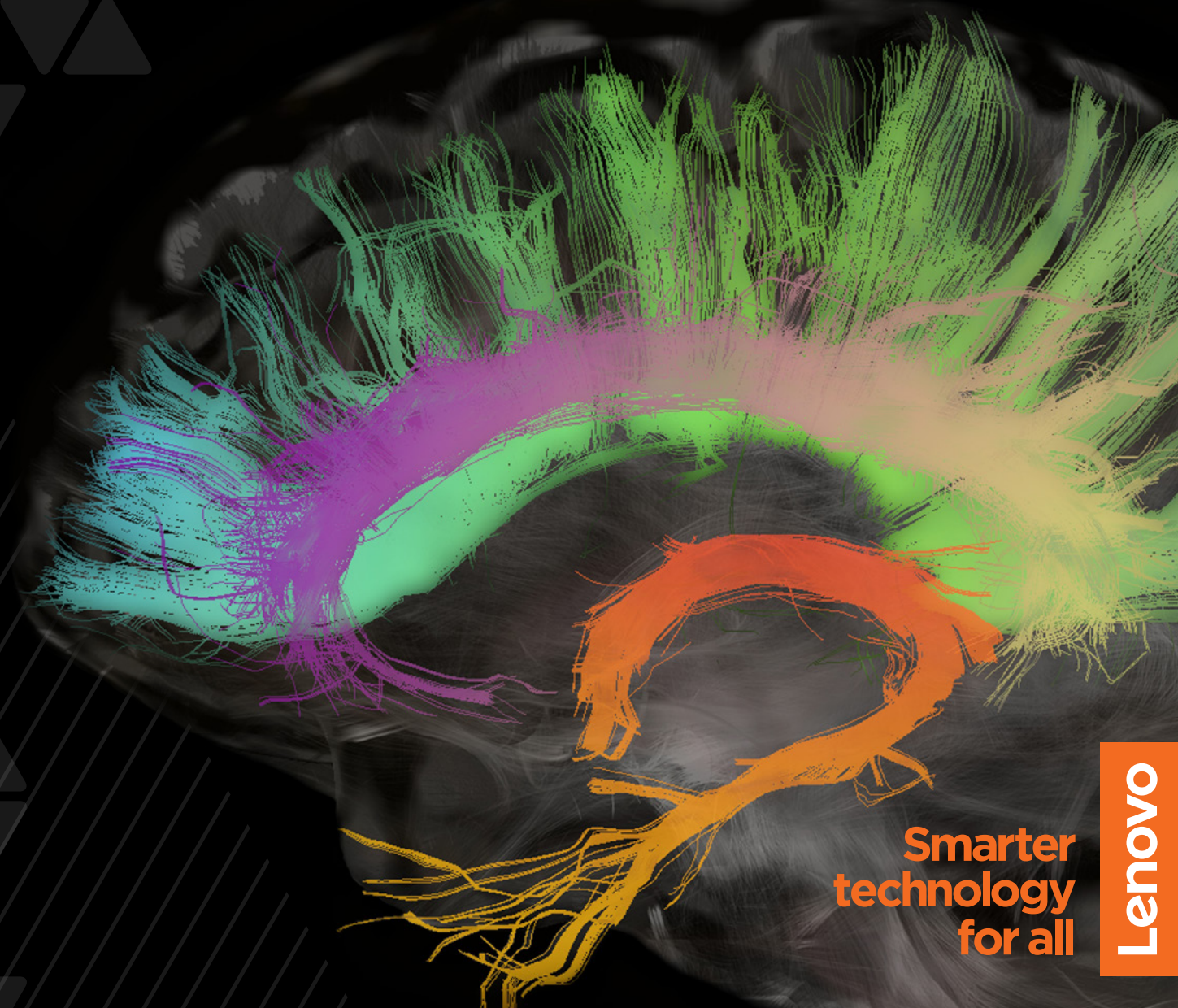


Lenovo
OEM Solutions
powered by Intel® processors

Designing the next modality: What's in store?

How computing power is driving
innovation in medical imaging

intel®



Smarter
technology
for all

Lenovo

The innovation of imaging

Until Wilhelm Röntgen first observed the existence of X-rays in 1895, medical science had no way to see inside the human body without surgery. That Nobel Prize-winning discovery unlocked a new world of scientific opportunities, revolutionizing medicine and introducing the concepts of radiology and medical imaging.

It was another Nobel Prize-winning innovation in 1971 by Godfrey Hounsfield that paired X-ray imaging with the rapidly evolving technology of computers to assemble multiple images into a more detailed and diagnostically valuable picture through computerized tomography (CT) imaging.

Lenovo

intel.

TABLE OF CONTENTS

The symbiosis of imaging and compute power **3**

Where the growth is happening: Startups **4**

The value of modern modalities **5**

New perspectives on 3D medical imaging **6**

Innovation from the inside out **7**

The symbiosis of imaging and compute power

Since that time, advances in diagnostic imaging have been inextricably linked to advances in computing power. In addition to expanding the speed and flexibility of radiology workflows through the development of image management systems (e.g., RIS, PACS, VNA) and remote reading solutions, computer technology is constantly driving newer, better, faster diagnostic solutions.

For example, one innovative company recently developed a rapid MRI-based heart function scan that quantifies the effects of disease, drugs, and ischemia across 48 distinct heart segments in under 10 minutes.²

In this e-book, we'll take a deeper look at where the innovations in diagnostic imaging are happening and how computing power helps deliver the next generation of imaging solutions.

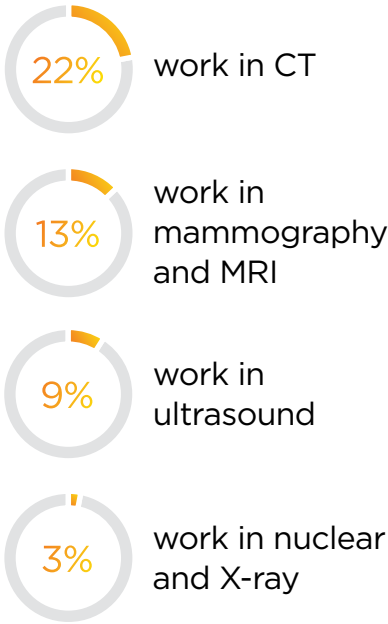


Technology advances have impacted diagnostic scan interpretation workflows. Scan volumes in a typical radiologist's workload have increased by 20% to 50% in the past five years.¹

Where the growth is happening: Startups

The medical device industry as a whole is experiencing an explosion of innovation. Global patents related to medical devices tripled in the past 10 years, and technology cycle times have been cut in half in just five years. Artificial intelligence (AI) and machine learning (ML) are primary drivers of these increased cycles of innovation, and diagnostic imaging stands to substantially benefit due to the large amounts of data that imaging generates.³ Hospitals are producing 50 petabytes (50,000,000 gigabytes) of data per year, and 90% of all that healthcare data comes from medical imaging.⁴

The global medical imaging market was measured at \$29.8 billion in 2016 and is expected to reach \$45.1 billion in 2022.⁵ A recent study of startup ventures in the medical imaging industry showed that the majority of these companies are focusing on AI and ML.³ The study also notes that most of these companies specialize in a particular modality that generates large data sets on specific parts of the body:

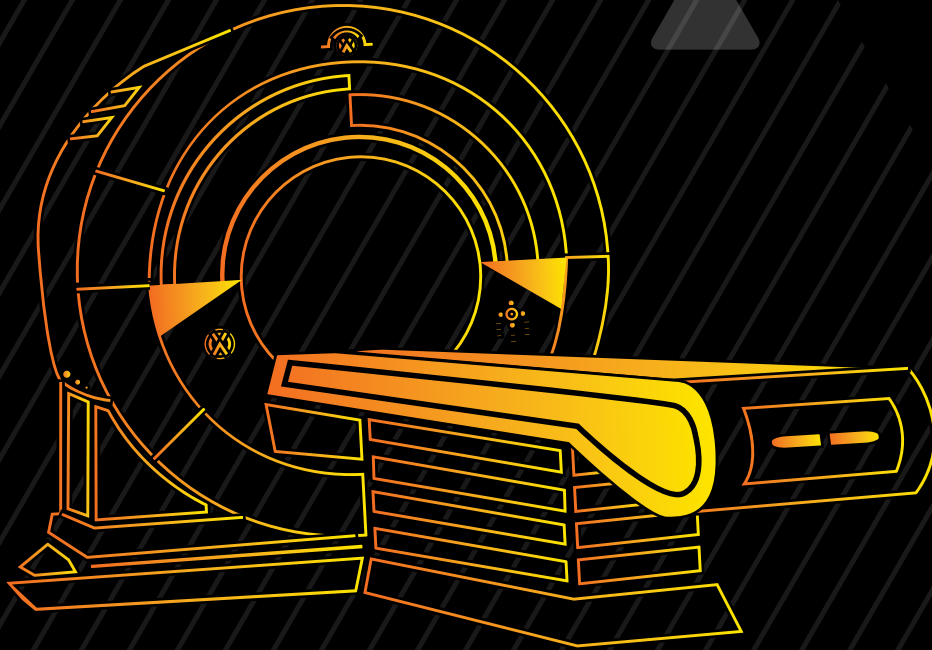


72% of the companies studied were using deep learning algorithms to identify lesions or abnormalities in images. However, research indicates that AI and ML are not expected to advance to the point that radiologists are no longer needed to interpret scans.



10x faster?

Researchers at NYU are studying how AI could increase MRI scan speeds by a factor of 10, which could lead to MRIs replacing radiation-based scans in some applications.⁶



The value of modern modalities

As software startups leverage AI and ML to speed the diagnosis of disease, medical imaging modality manufacturers are evaluating ways AI can improve the performance of their devices to bring greater value to their customers.⁷

In addition to accelerating image reconstruction times and maximizing image clarity and fidelity, modality OEMs are investigating new ways to make their machines smarter and more efficient, producing a number of important benefits:

- **Reduced radiation exposure** — By improving the reconstruction of low-dose CT images, which tend to be noisy, AI helps limit the amount of radiation a patient receives from each study. This also reduces the patient's lifetime exposure risk.
- **Faster MRI scans** — To support faster image acquisition speeds, AI enhances under-sampled scans caused by the resulting decrease in data flow.
- **Fewer repeat scans** — AI detects whether the patient is positioned correctly and the technician has selected the correct protocol and scan angle, which helps avoid poor image quality and repeat scans.
- **Fewer scans overall** — By detecting abnormalities on the fly, AI optimizes the original scan in real time to gain additional data along with the initial target information.
- **Reduced operator variability** — AI guidance helps technicians ensure consistent image acquisition, particularly in ultrasound applications.

Simplifying the setup and operation of imaging hardware has the potential to bring significant benefits, especially in emerging markets where skilled imaging technicians and clinicians may be in short supply. With onboard AI, technicians have interactive guidance helping them position the machine and patient while ensuring they select the right settings for each study based on the patient's age, gender, disease, etc.⁸

New perspectives on 3D medical imaging

Accurate, detailed visualization is critical for planning medical procedures, especially for complex systems of the body like the cardiovascular and nervous systems. Seeing a tumor or structural defect from multiple angles helps physicians prepare for procedures much more effectively.

3D medical imaging is steadily and significantly evolving. As computing power continues to increase, diagnostic imaging will continue to contribute to improved patient outcomes. Recent examples of 3D medical innovation include:

1 Cinematic rendering

Developed at Johns Hopkins Medicine by Dr. Eliot Fishman, cinematic rendering produces photorealistic images by combining 3D CT or 3D MRI scans with volumetric visualizations and other computer-generated image technology. Cinematic rendering provides clinicians greater detail on the texture of tumors, helping determine whether the tumors are cancerous.⁹

2 Tomosynthesis

Also known as 3D mammography, tomosynthesis captures images at multiple angles and varying depths to create a 3D data set. This technology has been shown to improve care planning for breast cancer patients, particularly those in high-risk categories.⁹

3 Combining 3D imaging and printing

With the depth and accuracy of today's 3D medical imaging, hospitals are able to create accurate, patient-specific physical models of internal organs and structures, helping guide surgeons through complex procedures. For example, at the Henry Ford Hospital in Detroit, surgeons use 3D-printed models to test-fit heart valves before a procedure.¹⁰

Lenovo

intel

Innovation from the inside out

The computing power that drives innovation in medical imaging has to be fast, reliable, and built to last. Whether built into an imaging modality or part of an AI-driven image processing system, the demand for smarter, more advanced computing software and hardware intelligence has never been greater and is widely forecast to increase.

For imaging equipment manufacturers, that means finding a partner able to deliver the highest-quality technology with the engineering support to integrate that technology seamlessly on a global scale.

Manufacturers also must consider a partner's technology pipeline stability and succession planning, as medical imaging devices often have extended refresh cycles.

As manufacturers and computing hardware vendors continue to work together to build a smarter, more capable, and more innovative future for medical imaging, we can only imagine the lifesaving potential these forthcoming breakthroughs will have on treating disease and injury — and bringing new hope for patients around the world.

Lenovo**intel.**

As the world's #1 PC manufacturer, Lenovo is committed to supporting the medical imaging industry with world-class technology solutions and industry-leading service.

Contact your Lenovo representative or visit Lenovo online today to learn more about our complete line of OEM solutions.

**Lenovo
OEM Solutions**
powered by Intel® processors

intel®

GET SMARTER WITH LENOVO

Connect with Lenovo. We're experts at breaking down barriers and building smart solutions. When you're ready, we're here to help.



Contact your Lenovo Account Representative or local Business Partner



Visit www.Lenovo.com/oem

SOURCES

- 1 Levin D, Rao V, Parker L, et al. Continued growth in emergency department imaging is bucking the overall trends. J Am Coll Radiol
- 2 <https://www.prnewswire.com/news-releases/new-rapid-cardiac-mr-imaging-helps-detect-and-manage-patient-heart-health-during-and-after-cancer-treatments-301106717.html>
- 3 [https://www.jacr.org/article/S1546-1440\(18\)31282-1/fulltext](https://www.jacr.org/article/S1546-1440(18)31282-1/fulltext)
- 4 <https://www.gehealthcare.com/article/beyond-imagingthe-paradox-of-ai-and-medical-imaging-innovation>
- 5 <https://www.prnewswire.com/news-releases/innovative-advancements-in-medical-imaging-devices-hold-the-potential-to-save-lives-301065748.html>
- 6 <https://www.popsci.com/AI-fast-MRI/>
- 7 <https://www.signifyresearch.net/medical-imaging/the-next-frontier-medical-imaging-ai-in-the-age-of-edge-computing/>
- 8 <https://www.itnonline.com/article/top-4-technologies-medical-imaging>
- 9 <https://healthtechmagazine.net/article/2018/07/how-3d-technology-transforming-medical-imaging-perfcon>
- 10 <https://www.merraine.com/5-future-trends-in-imaging-technology-to-watch/>

© 2020 Lenovo. All rights reserved. Lenovo and the Lenovo logo are trademarks of Lenovo in the United States, other countries, or both. All other trademarks are the property of their respective owners. V1.00 November 2020.

Lenovo